

TECHNICAL MANUAL

**GENERAL SUPPORT MAINTENANCE REPAIR PARTS
AND SPECIAL TOOLS LISTS
(INCLUDING DEPOT MAINTENANCE REPAIR PARTS
AND SPECIAL TOOLS)**

FOR

TEST SET, SIGNAL DATA CONVERTER

AN/AYM-8

(NSN 6625-00-137-2289)

**HEADQUARTERS, DEPARTMENT OF THE ARMY
AUGUST 1978**

TECHNICAL MANUAL

No. 11-6625-2479-40P

HEADQUARTERS
DEPARTMENT OF THE ARMY
WASHINGTON, DC, 29 August 1978

**GENERAL SUPPORT MAINTENANCE REPAIR PARTS AND SPECIAL TOOLS LISTS
(INCLUDING DEPOT MAINTENANCE REPAIR PARTS AND SPECIAL TOOLS)**

FOR

TEST SET, SIGNAL DATA CONVERTER AN/AYM-8

(NSN 6625-00-137-2239)

Current as of 10 March 1978

REPORTING OF ERRORS

You can improve this manual by recommending improvements using DA Form 2028-2 located in the back of the manual. Simply tear out the self-addressed form, fill it out as shown on the sample, fold it where shown and drop it in the mail.

If there are no blank DA Forms #2028-2 in the back of your manual, use standard DA Form 2028 (Recommended Changes to Publications and Blank Forms) and forward to the Commander, US Army Communications and Electronics Materiel Readiness Command, ATTN: DRSEL-M-Q, Fort Monmouth, NJ 07703.

In either case a reply will be furnished direct to you.

*This manual supersedes TM 11-6625-2479-40P, 19 February 1976.

		Page	Illus. Figure
SECTION	I.	Introduction	1
	II.	Repair parts list	5
GROUP	00	Test Set, Signal Data Converter AN/AYM-8	5 1
	01	Test Set, Signal Data Converter TS-3089/AYM-8	7 2
		0101 Case assembly	9 3
		0102 Cover Test Set CW-1148/AYM-8	11 4
		0103 Panel assembly (1A3)	17 5
		010301 Basket assembly (1A3A6)	23 6
		010302 Monitor assembly (1A3A5)	25 7
		01030201 Monitor box assembly (1A3A5A3).....	27 8
		01030202 Tube housing assembly (1A3ASA4)	29 9
		01030203 Component board assembly (1A3A5A1)	31 10
		01030204 Component board assembly (1A3A5A2)	33 11
		010304 Power supply (1A3A1)	35 12
		010304 Bezel assembly (1A3A7)	39 13
		010305 Component board (1A3A4)	41 14
		010306 Board assembly, simulator (1A3A3)	43 15
		010307 Display and data demand board assembly (1A3A2)	45 16
	02	Case Test Set CY-7114/AYM-8	47 17
GROUP		0201 Extender Circuit Card MX-8966/AYM	49 18
		0202 Cable Assembly, Power Electrical CX-12714/AYM-8 (2W1)	51 19
		0203 Cable Assembly, Special Purpose, Electrical CX-12715/AYM-8 (2W2)	51 19
		0204 Cable Assembly, Special Purpose, Electrical, Branched CX-12716/AYM-8 (2W3)	51 19
		0205 Cable Assembly, Special Purpose, Electrical, Branched CX-12717/AYM-8 (2W4)	51 19
		0206 Cable Assembly, Special Purpose, Electrical CX-12718/AYM-8 (2W5)	51 19
		0207 Cable Assembly, Special Purpose, Electrical, Branched CX-12719/AYM-8 (2W6)	51 19
		0208 Cable Assembly, Radio Frequency CG- 3679/AYM-8 (2W7, 2W11, 2W12)	51 19
		0209 Cable Assembly, Power Electrical, Branched CX-12724/AYM-8 (2W8)	52 19
		0210 Cable Assembly, Special Purpose Electrical CX-12721/AYM-8 (2W9)	52 19
		0211 Cable Assembly, Special Purpose Electrical CX-12722/AYM-8 (2W10)	52 19
		0212 Case base assembly	55 20
		0213 Case cover assembly	57 21
SECTION	III.	Special tools list (Not applicable	
	IV.	National stock number and part number list	58

**SECTION I
INTRODUCTION**

1. Scope

This manual lists spares and repair parts; special tools; special test, equipment, and diagnostic equipment (TMDE), and other special support equipment required for performance of general support maintenance of the AN/AYM-8. It authorizes the requisitioning and issue of spares and repair parts as indicated by the source and maintenance codes.

2. General

This Repair Parts and Special Tools List is divided into the following sections:

a. *Section II. Repair Parts List.* A list of spares and repair parts authorized for use in the performance of maintenance. The list also includes parts which must be removed for replacement of the authorized parts. Parts lists are composed of functional groups in numeric sequence, with the parts in each group listed in figure and item number sequence.

b. *Section III. Special Tools List. Not applicable.*

c. *Section IV. National Stock Number and Part Number Index.* A list, in National item identification number (NIIN) sequence, of all National stock numbers (NSN) appearing in the listings, followed by a list, in alphameric sequence, of all part numbers appearing in the listings. National stock numbers and part numbers are cross-referenced to each illustration figure and item number appearance.

3. Explanation of Columns

a. *Illustration.* This column is divided as follows:

(1) *Figure number.* Indicates the figure number of the illustration on which the item is shown.

(2) *Item number.* The number used to identify item called out in the illustration.

b. *Source, Maintenance, and Recoverability (SMR) Codes.*

(1) *Source code.* .Source codes indicate the manner of acquiring support items for maintenance, repair, or overhaul of end items. Source codes are

entered in the first and second positions of the Uniform SMR Code format as follows:

<i>Code</i>	<i>Definition</i>
PA- -	Item procured and stocked for anticipated or known usage.
XD -	A support item that is not stocked. When required, item will be procured through normal supply channels.

NOTE

Cannibalization or salvage may be used as a source of supply for any items source coded above except those coded XA and aircraft coded above except those coded XA and aircraft support items as restricted by AR 70042.

(2) *Maintenance code.* Maintenance codes are assigned to indicate the levels of maintenance authorized to USE and REPAIR support items.. The maintenance codes are entered in the third and four positions of the Uniform SMR Code format as follows:

(a) The maintenance code entered in the third position will indicate the lowest maintenance level authorized to remove, replace, and use the support item. The maintenance code entered in the third position will indicate one of the following levels of maintenance:

<i>Code</i>	<i>Application/Explanation</i>
O -	Support item is removed, replaced, used at the organization level.
H -	Support item is removed, replaced, used at the general support level.
D -	Support items that are removed, replaced, used at depot, mobile depot, specialized repair activity only.

(b) The maintenance code entered in the fourth position indicates whether the item is to be repaired and identifies the lowest maintenance level with the capability to perform complete repair (i.e., all authorized maintenance functions). This position will contain one of the following maintenance codes:

<i>Code</i>	<i>Application/Explanation</i>
H -	The lowest maintenance level capable of complete repair of the support item is the general support level.
D -	The lowest maintenance level capable of complete repair of the support item is the depot level.
Z -	Nonreparable. No repair is authorized.

(3) Recoverability code. Recoverability codes are assigned to support items to indicate the disposition action on unserviceable items. The recoverability code is entered in the fifth position of the Uniform SMR Code format as follows:

<i>Recoverability codes</i>	<i>Definition</i>
Z -	Nonreparable item. When unserviceable, condemn and dispose at the level indicated in position 3.
H -	Reparable item. When uneconomically repairable, condemn and dispose at the general support level.
L -	Reparable item. Repair, condemnation, and disposal not authorized below depot/specialized repair activity level.

c. *National Stock Number.* Indicates the National stock number assigned to the item and will be used for requisitioning purposes.

d. *Part Number.* Indicates the primary number used by the manufacturer (individual, company, firm, corporation, or Government activity), which controls the design and characteristics of the item by means of its engineering drawings, specifications, standards, and inspection requirements to identify an item or range of items.

NOTE

When a stock numbered item is requisitioned, the repair part received may have a different part number than the part being replaced.

e. *Federal Supply Code for Manufacturer (FSCM).* The FSCM is a S-digit numeric code listed in SB 708-42 which is used to identify the manufacturer, distributor, or Government agency, etc.

f. *Description.* Indicates the Federal item name and, if required, a minimum description to identify the item.

g. *Unit of Measure (U/M).* Indicates the standard of the basic quantity of the listed item as used in performing the actual maintenance function. This measure is expressed by a two-character alphabetical abbreviation (e.g., ea, in, pr, etc). When the unit of measure differs from the unit of issue, the lowest unit of issue that will satisfy the required units of measure will be requisitioned.

h. *Quantity Incorporated in Unit.* Indicates the quantity of the item used in the breakout shown on the illustration figure, which is prepared for a functional group, subfunctional group, or an assembly.

4. Special Information

The following publications pertain to the AN/AYM-8 and its components:
 TM 11-6625-2479-12, Test Set, Signal Data Converter AN/AYM-8
 TM 11-6625-2479-40, Test Set, Signal Data Converter AN/AYM-8.

5. How to Locate Repair Parts

a. When National stock number or part number is unknown.

(1) *First.* Using the table of contents, determine the functional group within the item belongs. This is necessary since illustrations are prepared for functional groups and listings are divided into the same groups.

(2) *Second.* Find the illustration covering the functional group to which the item belongs.

(3) *Third.* Identify the item on the illustration and note the illustration figure and item number of the item.

(4) *Fourth.* Using the Repair Parts Listing, find the figure and item number noted on the illustration.

b. When National stock number or part number is known.

(1) *First.* Using the Index of National Stock Numbers and Part Numbers, find the pertinent National

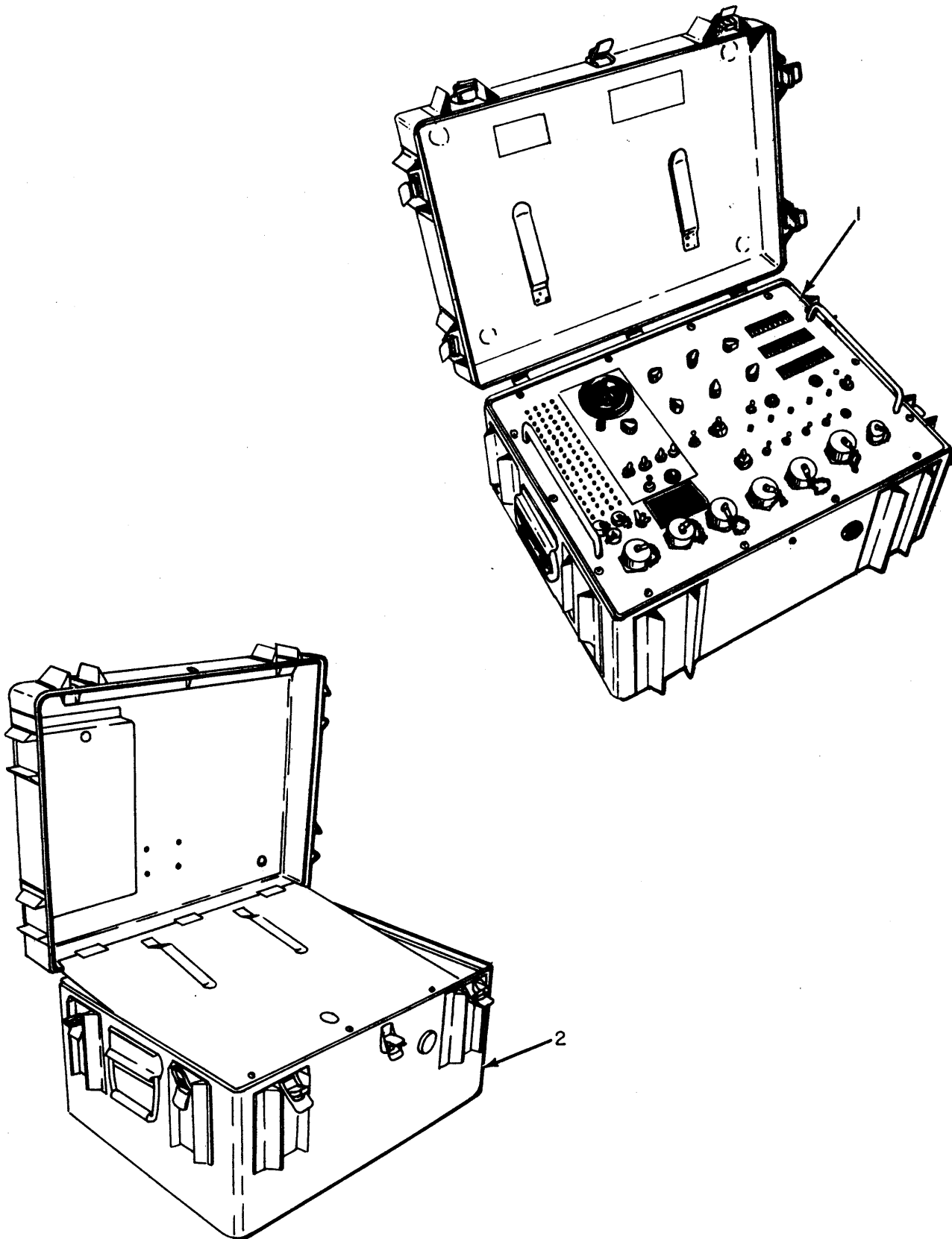
stock number or part number. This index is in NIIN sequence followed by a list of part numbers in alphameric sequence, cross-referenced to the illustration figure, number item number.

(2) *Second.* After finding the figure and item number, note the figure and item number in the repair parts list.

6. Abbreviations

Not applicable.

(Next printed page is 4)



EL4LU001

Figure 1. Test Set, Signal Data Converter AN/AYM-8.

SECTION II

ILLUSTRATION		SMR CODE	NATIONAL STOCK NUMBER	PART NUMBER	FSCM	DESCRIPTION USABLE ON CODE	U/M	QTY INC IN UNIT
(a) FIG NO.	(b) ITEM NO.							
1	1	PAOHH	6625-00-495-0657	TS3089AYM8	26512	GROUP 00 TEST SET, SIGNAL DATA CONVERTER AN/AYM-8	EA	1
1	2	PAOHH	6625-00-242-3785	CY7114AYM8	26512	TEST SET SIGNAL DATA CONVERTER CASE,TEST SET	EA	1

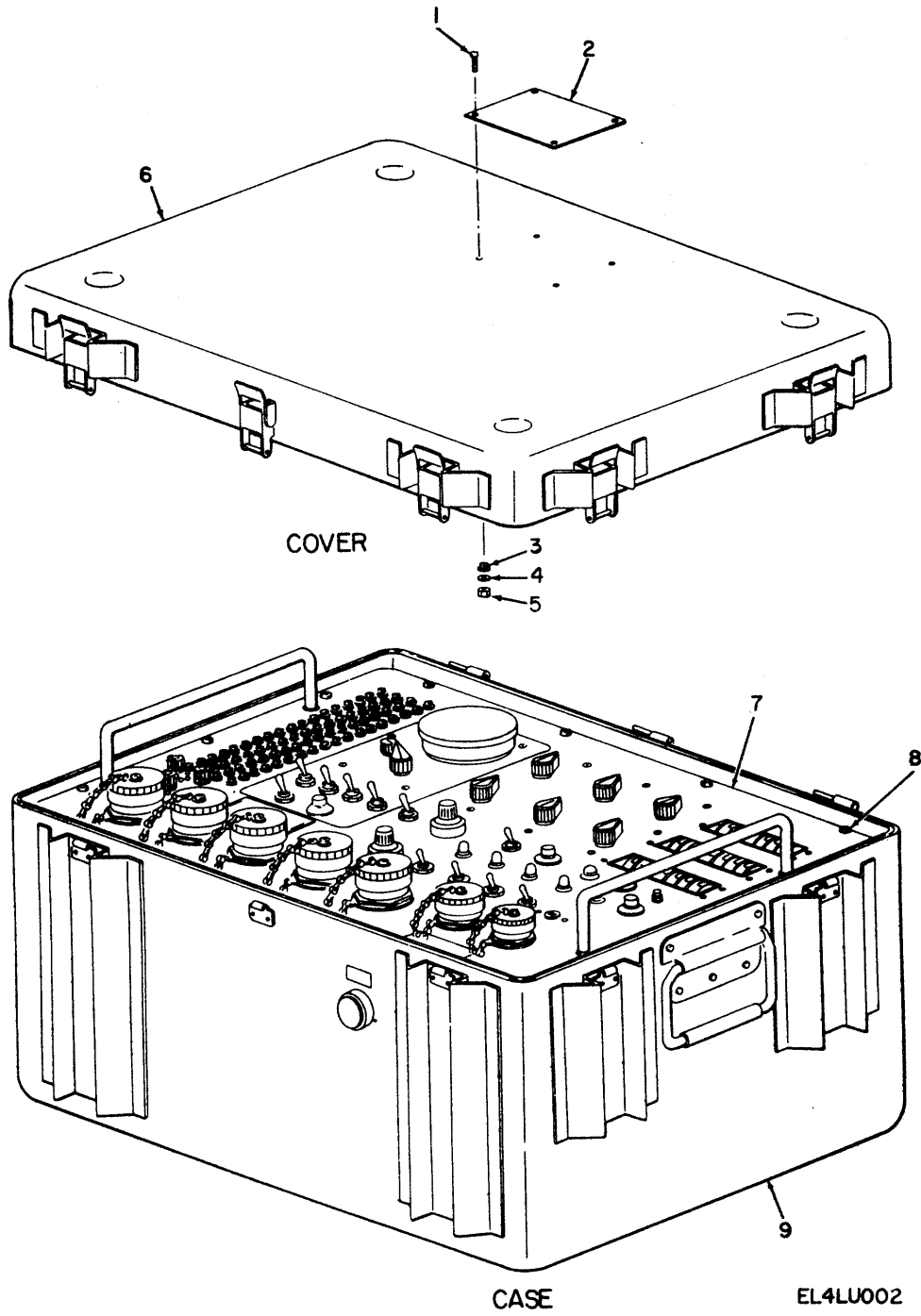


Figure 2. Test Set, Signal Data Converter TS-3089/AYM-8.

SECTION II

ILLUSTRATION		SMR CODE	NATIONAL STOCK NUMBER	PART NUMBER	FSCM	DESCRIPTION USABLE ON CODE	U/M	QTY INC IN UNIT
(a) FIG NO.	(b) ITEM NO.							
						GROUP 01 TEST SET.SIGNAL DATA CONVERTER TS-3089/AYM-8		
2	1	PAHZZ	5305-00-054-5649	MS51957-15	96906	SCREW.MACHINE	EA-	4
2	2	XDHZZ		134SEAV14060-11	26512	NAMEPLATE	EA	1
2	3	PAHZZ	5330-00-966-8883	MAS1598C04Y	80205	WASH, SEALING	EA	4
2	4	PAHZZ	5310-00-595-6211	MS15795-803	96906	WASHER.FLAT	EA	4
2	5	PAHZZ	5310-00-807-1471	MS21042L04	96906	NUT,SELF-LOCKING HEXAGON	EA	4
2	6	PAOHH	6625-00-242-3784	CW1148AYM8	80058	COVER, TEST	EA	1
2	7	XDHHH		134SEAV14061-1	26512	PANEL ASSY	EA	1
2	8	PAHZZ	5305-00-151-9933	CA1402-4-12P	29372	SCREW.CAPTIVE	EA	14
2	9	XDOHH		134SEAV14067-1	26512	CASE ASSY,MODIFIED BASE	EA	1

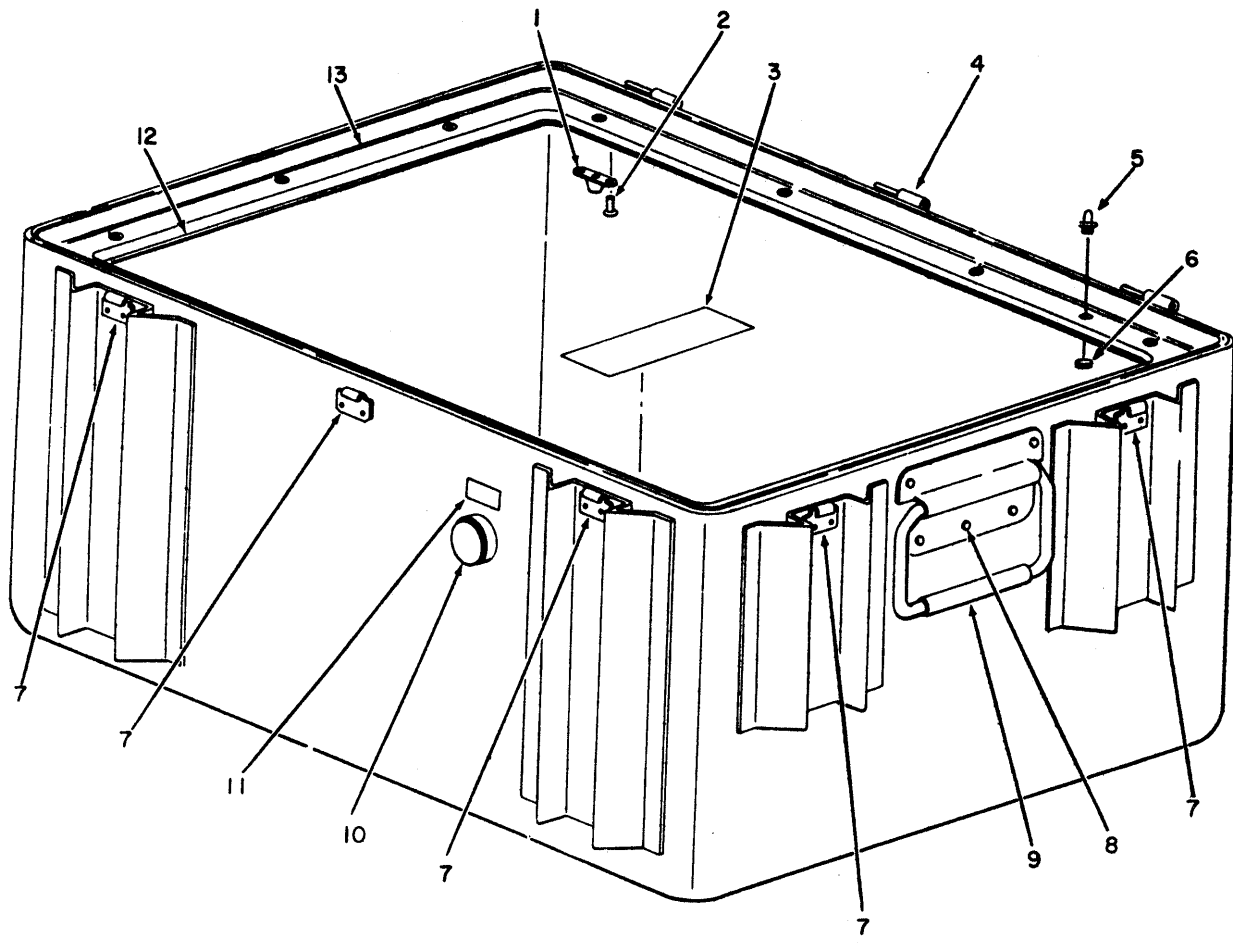
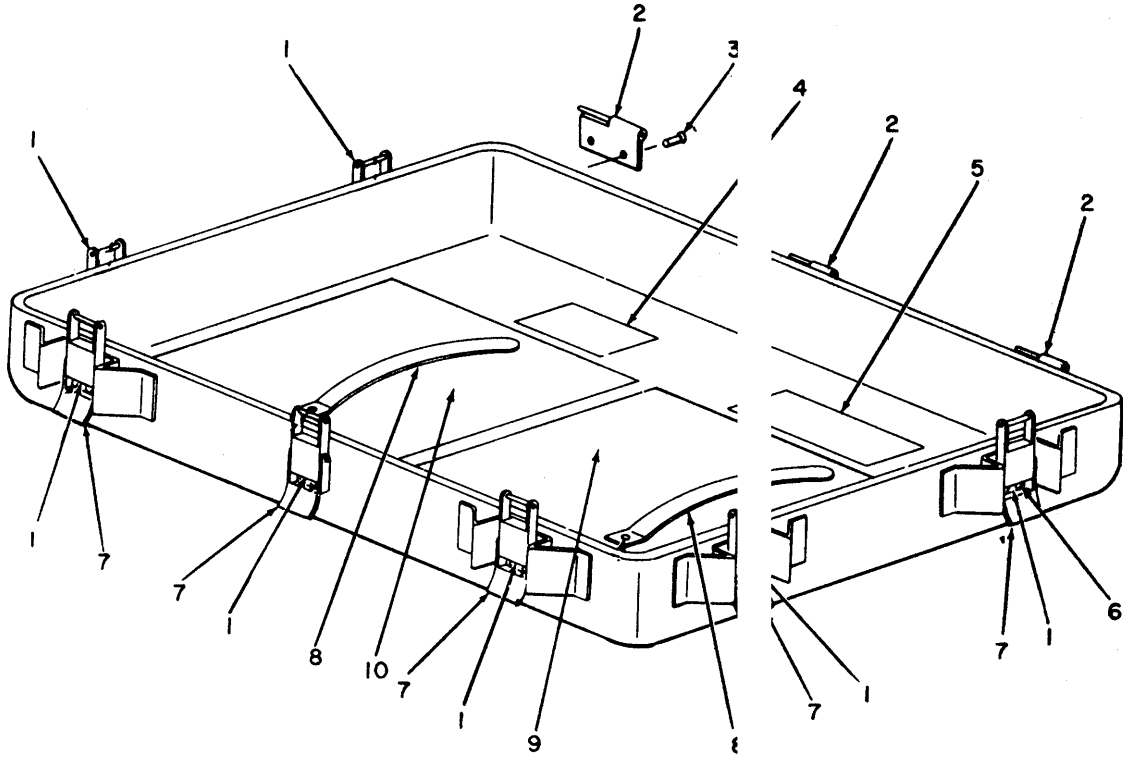


Figure 3. Case Assembly.

EL4LU003

SECTION II

ILLUSTRATION		SMR CODE	NATIONAL STOCK NUMBER	PART NUMBER	FSCM	DESCRIPTION USABLE ON CODE	U/M	QTY INC IN UNIT
(a) FIG NO.	(b) ITEM NO.							
3	1	PAHZZ	5310-00-151-9046	CA3403	29372	GROUP 0101 CASE ASSEMBLY PLATE, NUT	EA	14
3	2	XDHZZ		MS20426AD3	96906	RIVET, SOLID	EA	28
3	3	XDHZZ		134SEAV14067-11	26512	NAMEPLATE	EA	1
3	4	XDHZZ		ZSP4-400101	26512	HINGE HALF, MALE	EA	3
3	5	XDHZZ		134SEME10026-11	26512	PIN, LOCATING	EA	1
3	6	PAHZZ	5310-00-807-1472	MS 1042L06	96906	NUT, SELF-LOCKING HEXAGON	EA	1
3	7	PAHZZ	5310-00-402-4831	ZSP2-204-3	98376	LATCH STRIKE	EA	7
3	8	XDHZZ		MS20470AD6	96906	RIVET, SOLID	EA	24
3	9	XDHZZ	5340-00-948-9908	HA945LS2RG	98003	HANDLE ASSY	EA	2
3	10	PAHZZ	4820-00-898-3003	ZSP6-037-4	19178	VALVE, PRESSURE RELIEF	EA	1
3	11	XDHZZ		ZSP11-1108	19178	LABEL, RELIEF VALVE	EA	1
3	12	PAHZZ	5330-00-487-4111	ZSP5-504-78	98376	SEAL	EA	1
3	13	XDHZZ		D8660D1	19178	GASKET, RFI	EA	1



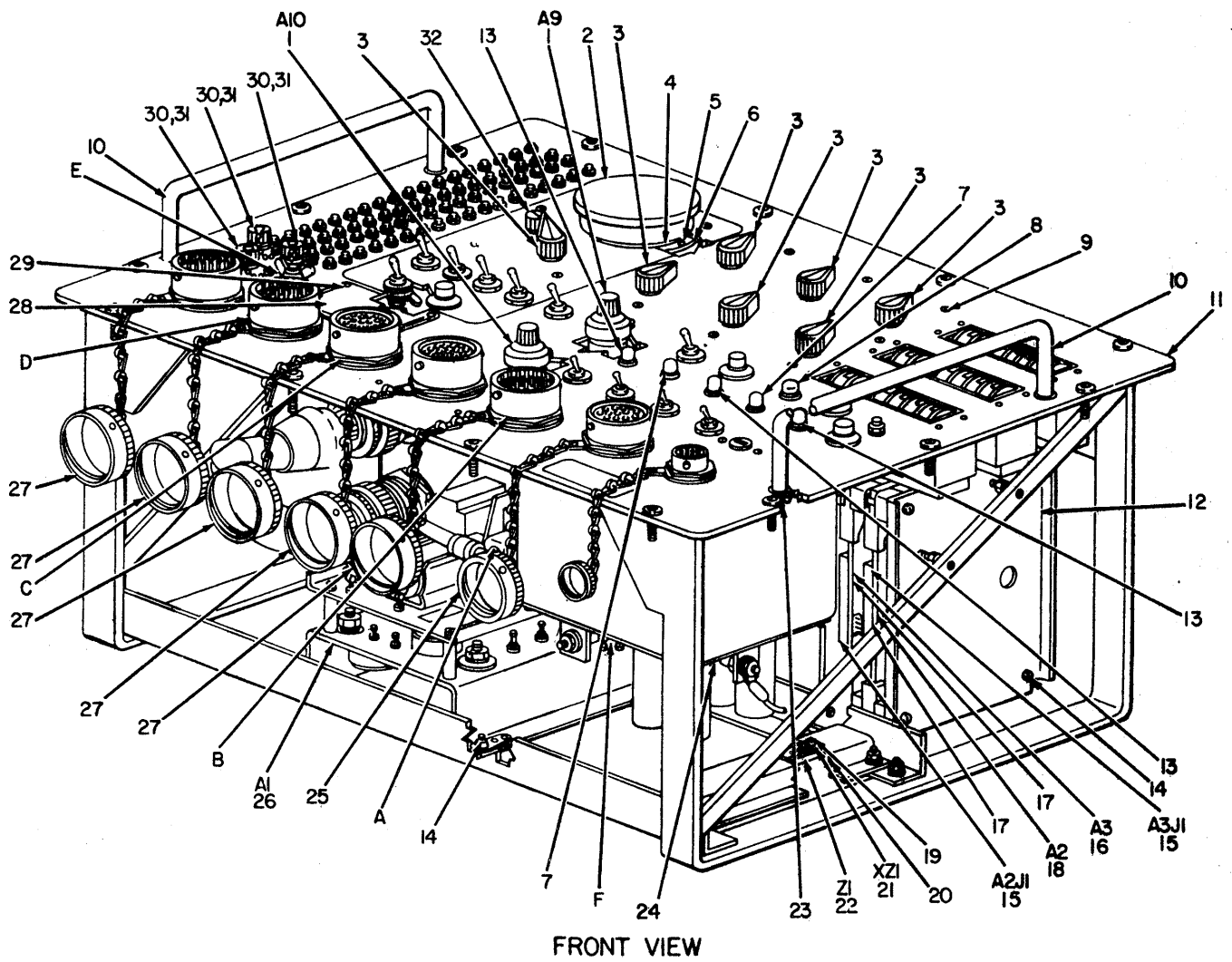
EL4LU004

Figure 4. Cover Test Set CW-1148/AYM-8

SECTION II

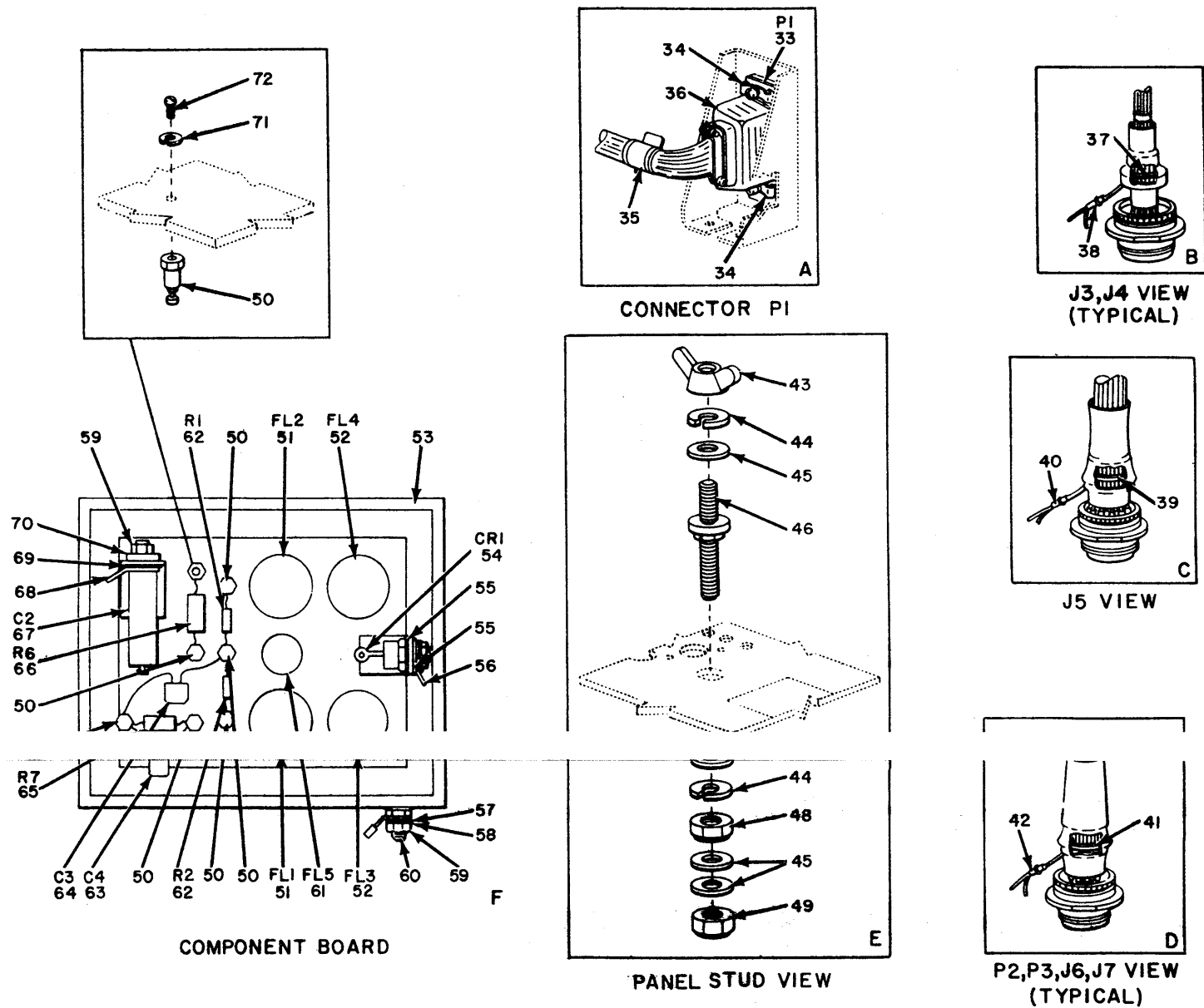
ILLUSTRATION		SMR CODE	NATIONAL STOCK NUMBER	PART NUMBER	FSCM	DESCRIPTION USABLE ON CODE	U/M	QTY INC IN UNIT
(a) FIG NO.	(b) ITEM NO.							
4	1	XDHZZ		ZSP2-204-2	98291	GROUP 0102 COVER TEST SET CW-1148/AYM-8 LATCH BODY	EA	7
4	2	XDHZZ		ZSP4-4001C1	19178	HINGE HALF, FEMALE	EA	3
4	3	XDHZZ		MS20470AD4	96906	RIVET, SOLID	EA	10
4	4	XDHZZ		134SEAV14067-13	26512	NAMEPLATE	EA	1
4	5	XDHZZ		134SEAV14067-15	26512	NAMEPLATE	EA	1
4	6	XDHZZ		MS20470AD6	96906	RIVET, SOLID	EA	14
4	7	XDHZZ		SR83314	98003	SPRING, LATCH	EA	7
4	8	XDHZZ		ZSP9-902	19178	CLIP, CARD	EA	2
4	9	XDHZZ		134SEAV14117-11	26512	PLACARD	EA	1
4	10	XDHZZ		134SEAV14117-13	26512	PLACARD	EA	1

11/(12 blank)



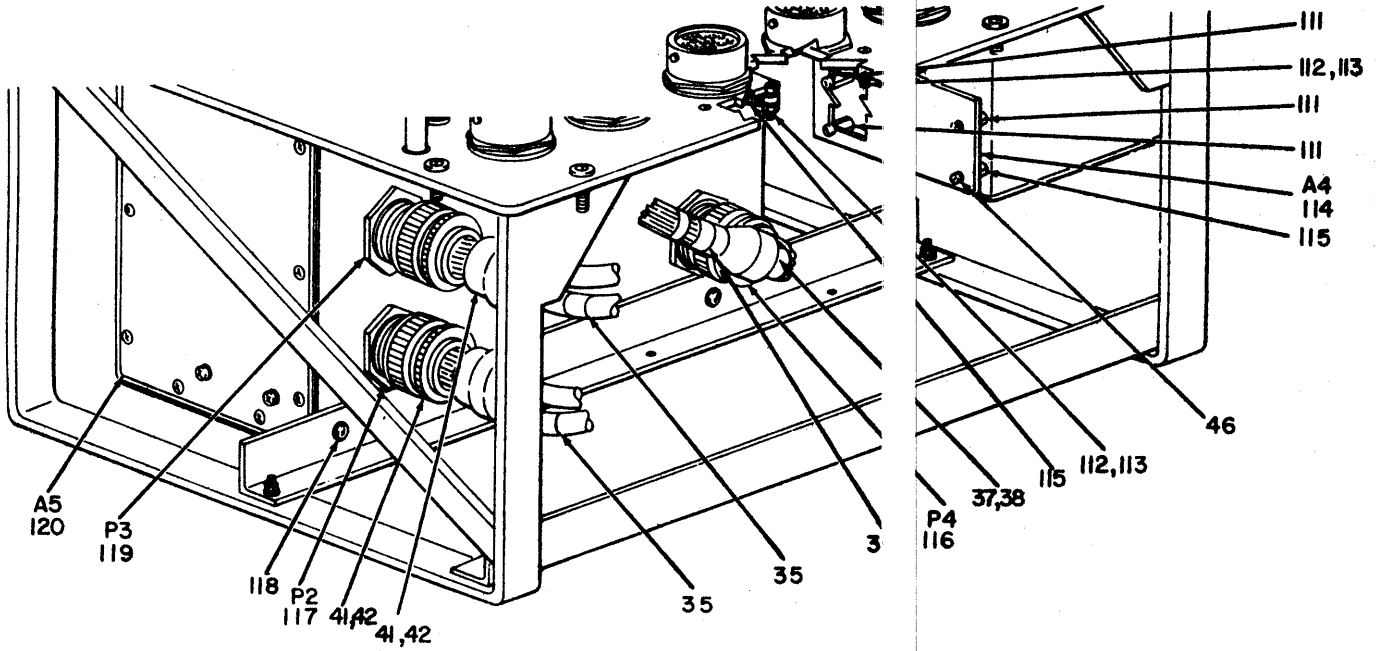
EL4LU005

Figure 5. Panel Assembly 1A3 (Sheet 1 of 4).



PANEL ASSEMBLY, DETAIL VIEWS

Figure 5. Panel Assembly 1A3 (Sheet 2 of 4)



FRONT INTERIOR VIEW

Figure 5. Panel Assembly 1A3 (Sheet 4 of 4).

EL4LU008

SECTION II

ILLUSTRATION		SMR CODE	NATIONAL STOCK NUMBER	PART NUMBER	FSCM	DESCRIPTION USABLE ON CODE	U/M	QTY INC IN UNIT
(a) FIG NO.	(b) ITEM NO.							
						GROUP 0103 PANEL ASSEMBLY 1A3		
5	1	PAOZZ	5355-00-775-4287	H492-3	26512	DIAL ELECTRICAL TURNS COUNTING	EA	2
5	2	XDHZZ		MS90376-48R	96906	CAP	EA	1
5	3	PAOZZ	5355-00-556-0145	MS91528-1K28	96906	KNOB	EA	7
5	4	XDHHH		134SEAV14072-1	26512	BEZEL ASSY	EA	1
5	5	PAHZZ	5305-00-403-7695	GS550C04C5	26512	SCREW	EA	3
5	6	XDHZZ		134SEAV14083-13	26512	GASKET	EA	1
5	7	PAOZZ	6210-00-145-1369	LC28RN2	26512	CAP,LENS	EA	2
5	8	XDOZZ		LC27CM2MIL3661-27	81349	CAP,LENS	EA	1
5	9	PAHZZ	5305-00-054-6655	MS51957-31	96906	SCREW MACHINE	EA	12
5	10	XDHZZ		1054981032-4A	26512	HANDLE	EA	2
5	11	XDHHH		134SEAV14078-1	26512	PANEL AND CHASSIS ASSY	EA	1
5	12	XDHHH		24430	26512	BASKET ASSY	EA	1
5	13	PAOZZ	6210-00-231-0613	LC27RN2	26512	CAP,LENS	EA	3
5	14	PAHZZ	5305-00-494-7334	MS51957-28	96906	SCREW MACHINE	EA	2
5	15	PAHZZ	5935-00-465-4193	PE1009	03877	CONNECTOR	EA	2
5	16	PAHDL	6625-00-163-5004	134SEAV14064-1	26512	INS SIMULATOR BOARD ASSY	EA	1
5	17	XDHZZ		96S2207	26512	PIN, KEY	EA	2
5	18	PAHDL	6625-00-163-5005	134SEAV14066-1	26512	BOARD ASSY,DISPLAY-DATA DEMAND	EA	1
5	19	PAHZZ	5310-00-80-1010	MS21042L02	96906	NUT,SELFLOCKING	EA	2
5	20	PAHZZ	5305-00-054-5638	MS51957-4	96906	SCREW,MACHINE	EA	2
5	21	XDHZZ		314AG3A	26512	SOCKET	EA	1
5	22	XDHZZ		U6A993251X	26512	MICROCIRCUIT	EA	1
5	23	XDHZZ		NAS1189C3PN7	26512	SCREW	EA	4
5	24	XDHHH		134SEAV14078-5	26512	COVER ASSY	EA	1
5	25	PAHZZ	5935-00-990-5565	MS3181-20N	96906	COVER	EA	1
5	26	XDHHH		134SEAV14069-9	26512	POWER SUPPLY	EA	1
5	27	PAHZZ	5935-00-778-4919	MS3181-22N	96906	COVER	EA	5
5	28	XDHZZ		134SEAV14061-13	26512	NAMEPLATE	EA	1
5	29	XDHZZ		MS20470AD3	96906	RIVET, SOLID	EA	4
5	30	PAHZZ	5340-00-956-5367	M39012-25-0006	81349	COVER	EA	3
5	31	PAHZZ	5305-00-054-5649	MS51957-15	96906	SCREW, MACHIIE	EA	5
5	32	PACZZ	5355-00-850-9799	MS91528-0N18	96906	KNOB	EA	1
5	33	XDHZZ		M2408-1-2MILL-24308-1	81349	CONNECTCR	EA	1
5	34	PAHZZ	5935-00-724-7159	D20419-16	26512	CLAMP	EA	2
5	35	XDHZZ		MSS17822-1-9	96906	BAND,PARKER BLANK	EA	4
5	36	PAHZZ	5935-00-783-9133	DA24658	26512	HOOD	EA	1
5	37	PAHZZ	5365-00-470-8016	G1285-5	26512	RING	EA	3

SECTION II

ILLUSTRATION		SMR CODE	NATIONAL STOCK NUMBER	PART NUMBER	FSCM	DESCRIPTION USABLE ON CODE	U/M	QTY INC IN UNIT
(a) FIG NO.	(b) ITEM NO.							
5	38	PAHZZ	5940-00-857-3414	D144-00	06090	SPLICE	EA	20
5	39	XDHZZ		G1285-6	26512	RING	EA	1
5	40	PAHZZ	5940-00-935-8317	D144-02	06090	SPLICE	EA	20
5	41	PAHZZ	5365-00-158-0277	G1285-4	06324	RING	EA	4
5	42	PAHZZ	5940-00-056-8696	D144-01	26512	SPLICE	EA	20
5	43	PAHZZ	5310-00-151-9078	C5947414282B	70318	NUT,WING	EA	2
5	44	PAHZZ	5310-00-933-8121	MS35338-139	96906	WASHER,LOCK	EA	2
5	45	PAHZZ	5310-00-531-9515	AN960C416	88044	WASHER, FLAT	EA	3
5	46	XDHZZ		134SEME14006-1	26512	STUD	EA	1
5	47	PAHZZ	5330-00-916-6472	NAS1598C4Y	80205	WASHER,SEALING	EA	1
5	48	PAHZZ	5310-00-685-2631	MS25082-4	96906	NUT	EA	1
5	49	PAHZZ	5310-00-807-1471	MS21042104	96906	NUT.SELFLOCKING	EA	5
9	50	PAHZZ	5940-00-812-8151	3650-2	71279	TERMINAL STUD	EA	7
5	51	XDHZZ		RF725	26512	FILTER	EA	2
5	52	PAHZZ	5915-00-956-6888	RF733	13619	FILTER	EA	2
5	53	XDHZZ		134SEAV14083-11	26512	GASKET	EA	1
5	54	PAHZZ	5961-00-494-4913	JANTX1N1202A	81350	DIODE	EA	1
5	55	PAHZZ	5970-00-151-9086	293422	76530	WASHER	EA	2
5	56	PAHZZ	5940-00-578-9896	1468	83330	TERMINAL	EA	7
5	57	XDHZZ		A960-8	26512	WASHER,FLAT	EA	2
5	58	PAHZZ	5310-00-543-2739	MS35333-72	96906	WASHER	EA	4
5	59	PAHZZ	5310-00-660-2971	MS25082-2	96906	NUT	EA	4
5	60	XDHZZ		NAS1454C08-0100	26512	ROD	EA	1
5	61	PAHZZ	5915-00-451-5822	RF1100-3	26512	FILTER	EA	1
5	62	XDHZZ		RRC20G514JM	26512	RESISTOR	EA	2
5	63	PAHZZ	5910-00-189-3835	M39014-01-0262	81349	CAPACITOR FXD ELEC	EA	1
5	64	PAHZZ	5910-00-484-2928	M39014-02-0246	81349	CAPACITOR,FIXED,	EA	1
5	65	PAHZZ	5905-00-247-8684	RRC32G105JR	81349	RESISTOR	EA	1
5	66	PAHZZ	5905-00-190-8868	RC42GF622J	81349	RESISTOR	EA	1
5	67	PAHZZ	5910-00-452-0921	PC39G121MILL1440	9	CAPACITOR	EA	1
5	68	PAHZZ	5940-00-143-4771	MS25036-103	81349	TERMINAL LUG	EA	1
5	69	XDHZZ		NAS1515HL3	96906	WASHER	EA	1
5	70	XDHZZ		2181003N	80205	WASHER,INSULATING	EA	1
5	71	PAHZZ	5935-00-990-5580	MS3181-14N	26512	COVER	EA	1
5	72	PAHZZ	5305-00-054-6651	MS51957-27	96906	SCREW. MACHINE	EA	7
5	73	PAHZZ	5935-00-762-0312	M39024-10-03	96906	TEST POINT	EA	72
5	74	PAHZZ	5905-00-150-0481	3500S90-502	26512	RESISTOR,VARIABLE	EA	1
5	75	PAHZZ	5930-00-655-1515	MS35058-23	80294	SWITCH, TOGGLE	EA	1
5	76	PAHZZ	5925-00-111-1737	M39019-1-85	96906	BREAKER,CIRCUIT	EA	1

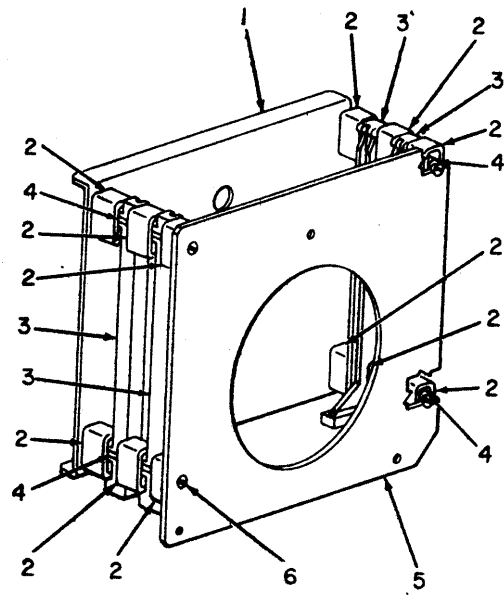
SECTION II

ILLUSTRATION		SMR CODE	NATIONAL STOCK NUMBER	PART NUMBER	FSCM	DESCRIPTION USABLE ON CODE	U/M	QTY INC IN UNIT
(a) FIG NO.	(b) ITEM NO.							
5	71	PAHZZ	5950-00-405-1219	3400S1-502	80294	RESISTOR,VARIABLE	EA	1
5	78	PAOZZ	6240-00-155-7857	MS25237-328	96906	LAMP,INCANDESCNET	EA	1
5	79	PAHZZ	6210-00-438-2234	MILL3661-5	81349	HOUSING	EA	4
5	80	PAHZZ	5930-00-655-1513	MS35058-21	96906	SWITCH, TOGGLE	EA	5
5	81	PAOZZ	6240-00-723-3378	MS25252C9A	96906	LAMP,NEON	EA	2
5	82	PAHZZ	6210-00-809-4274	MIL-L-3661/6	81349	HOUSING	EA	2
5	83	PAHZZ	5930-00-990-7257	W403P6	81640	SWITCH,PUSNBUTTON	EA	3
5	84	PAOZZ	6240-00-155-7836	MS25237-327	96906	LAMP,INCANDESCENT	EA	3
5	85	PAHZZ	5930-00-451-7586	7G130	07126	SWITCH ASSY	EA	1
5	86	PAHZZ	5305-00-054-5640	MS51957-6	96906	SCREW, MACHINE	EA	12
5	87	PAHZZ	5930-00-451-7588	7G132	07126	SWITCH ASSY	EA	1
5	88	PAHZZ	5930-00-451-7587	7G131	07126	SWITCH ASSY	EA	1
5	89	PAHZZ	6240-00-752-2581	MS24515-685	96906	LAMP,SUB MINIATURE	EA	1
5	90	PAHZZ	6210-00-242-6418	102SIA	26512	LAMP ASSY	EA	1
5	91	XDHZZ		GT11FAF06-8	26512	TERMINAL STUD INSTALLATION	EA	2
5	92	PAHZZ	5930-00-419-3987	WL501	81640	SWITCH,PUSHBUTTON	EA	1
5	93	XDHZZ		MS17322-2	96906	METER	EA	1
5	94	PAHZZ	5999-00-420-7175	96S22F03	03877	CONTACT	EA	130
5	95	PAHZZ	5310-00-045-4007	MS35338-41	96906	WASHER,LOCK	EA	8
5	96	PAHZZ	5310-00-807-1472	MS21042L06	96906	NUT	EA	4
5	97	XDHZZ		134SEAV14124-11	26512	BRACKET	EA	1
5	98	PAHZZ	5925-00-498-3390	M39019-3-39	81349	BREAKER,CIRCUIT	EA	1
5	99	PAHZZ	5935-00-880-8896	MS3124E14-5P	96906	CONNECTOR	EA	1
5	100	PAHZZ	5925-00-021-6513	M39019-3-59	81349	BREAKER,CIRCUIT	EA	1
5	101	PAHZZ	5935-00-728-9513	MS3124E20-16S	96906	CNNECTOR	EA	1
5	102	XDHZZ		M39019-1-9	81349	BREAKER,CIRCUIT	EA	1
5	103	PAHZZ	5935-00-784-5912	MS3124E22-55P	96906	CONNECTOR	EA	1
5	104	PAHZZ	5935-00-221-7465	MS3124E22-41S	96906	CONNECTOR	EA	1
5	105	PAHZZ	5935-00-725-4496	MS3124E22-55S	96906	CONNECTOR	EA	1
5	106	PAHZZ	5940-00-813-0698	MS25036-101	96906,	TERMINAL LUG	EA	34
5	107	PAHZZ	5935-00-951-9333	MS314E22-21P	96906	CONNECTOR	EA	1
5	108	XDHZZ		MS3114E22-21PW	96906	CONNECTOR	EA	1
5	109	PAHZZ	5935-00-853-7596	UG1094BU	80058	CONNECTOR	EA	3
5	110	PAHZZ	5930-00-655-1582	MS35059-23	96906	SWITCH,TOGGLE	EA	1
5	111	XDHZZ		9753SS0632-7	26512	SPACER	EA	4
5	112	XDHZZ		GT11F8F06-10	26512	TERMINAL STUD INSTALLATION	EA	2
5	113	PAHZZ	5330-00-853-3975	NAS1598C06Y	80205	WASHER,SEALING	EA	2
5	114	XDHHH		134SEAV14075-1	26512	BOARD ASSY, COMPONENT	EA	1
5	115	PAHZZ	594-00-283-5280	MS25036-106	96906	TERMINAL LUG	EA	6

SECTION II

ILLUSTRATION		SMR CODE	NATIONAL STOCK NUMBER	PART NUMBER	FSCM	DESCRIPTION USABLE ON CODE	U/M	QTY INC IN UNIT
(a) FIG NO.	(b) ITEM NO.							
5	116	PAHZZ	5935-00-988-4317	MS3126E20-41S	96906	CONNECTOR	EA	1
5	117	PAHZZ	5935-00-929-2600	MS3126E22-21SW	96906	CONNECTOR	EA	1
5	118	PAHZZ	5305-00-059-3659	MS51958-63	96906	SCREW	EA	2
5	119	PAHZZ	5935-00-786-7048	MS3126E22-21S	96906	CCNECTOR	EA	1
5	120	XDHHH		134SEAV14062-1	26512	MONITOR ASSY	EA	1

20/(21 blank)

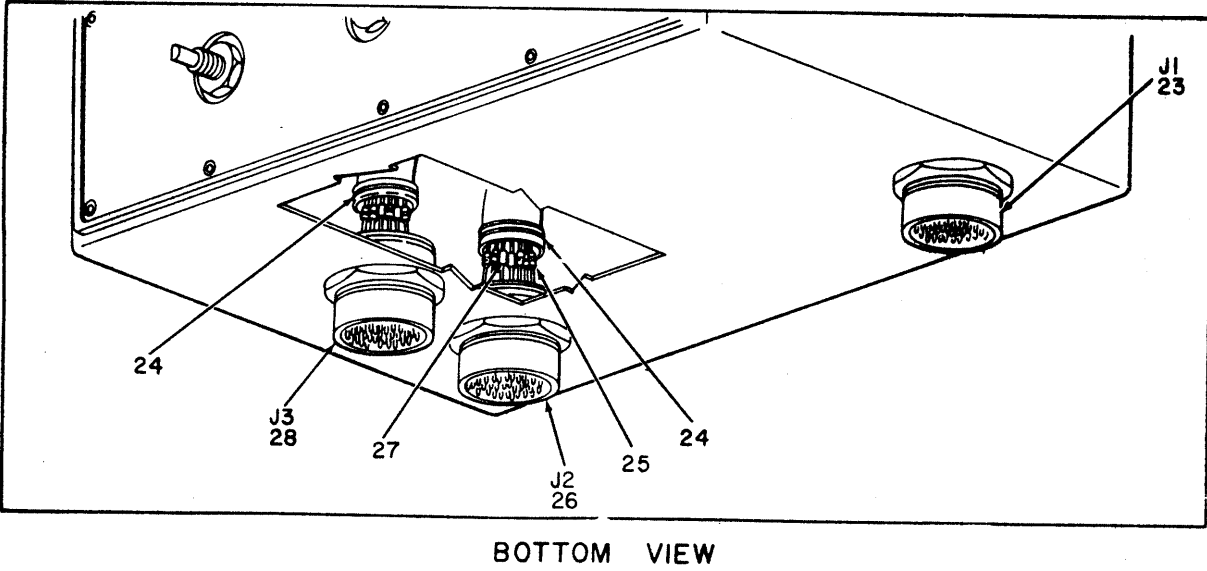
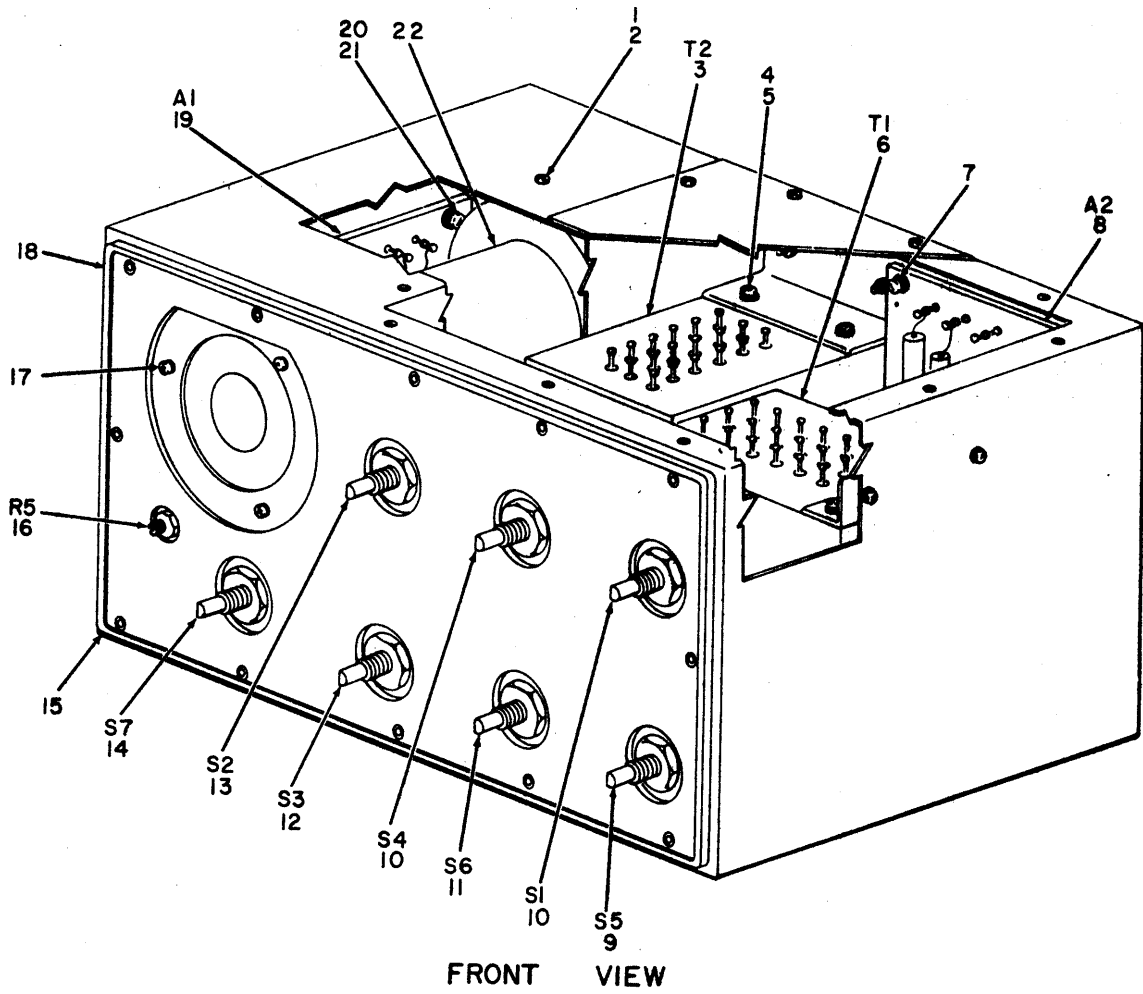


EL4LU009

Figure 6. Basket Assembly 1A3A6.

SECTION II

ILLUSTRATION		SMR CODE	NATIONAL STOCK NUMBER	PART NUMBER	FSCM	DESCRIPTION USABLE ON CODE	U/M	QTY INC IN UNIT
(a) FIG NO.	(b) ITEM NO.							
6	1	XDHZZ		24430-2	18677	GROUP 010301 BASKET ASSEMBLY 1A3A6	EA	1
6	2	PAHZZ	5365-00-931-8711	R102-500	18677	PLATE,END	EA	12
6	3	XDHZZ		R306-51	18617	SPACER	EA	2
6	4	XDHZZ		R901-2-125	18677	GUIDE.RIGHT	EA	4
6	5	XDHZZ		24430-1	18617	RCO	EA	1
6	6	PAHZZ	5305-00-727-8834	MS51959-48	96906	PLATE.END SCREW,MACHINE	EA	8

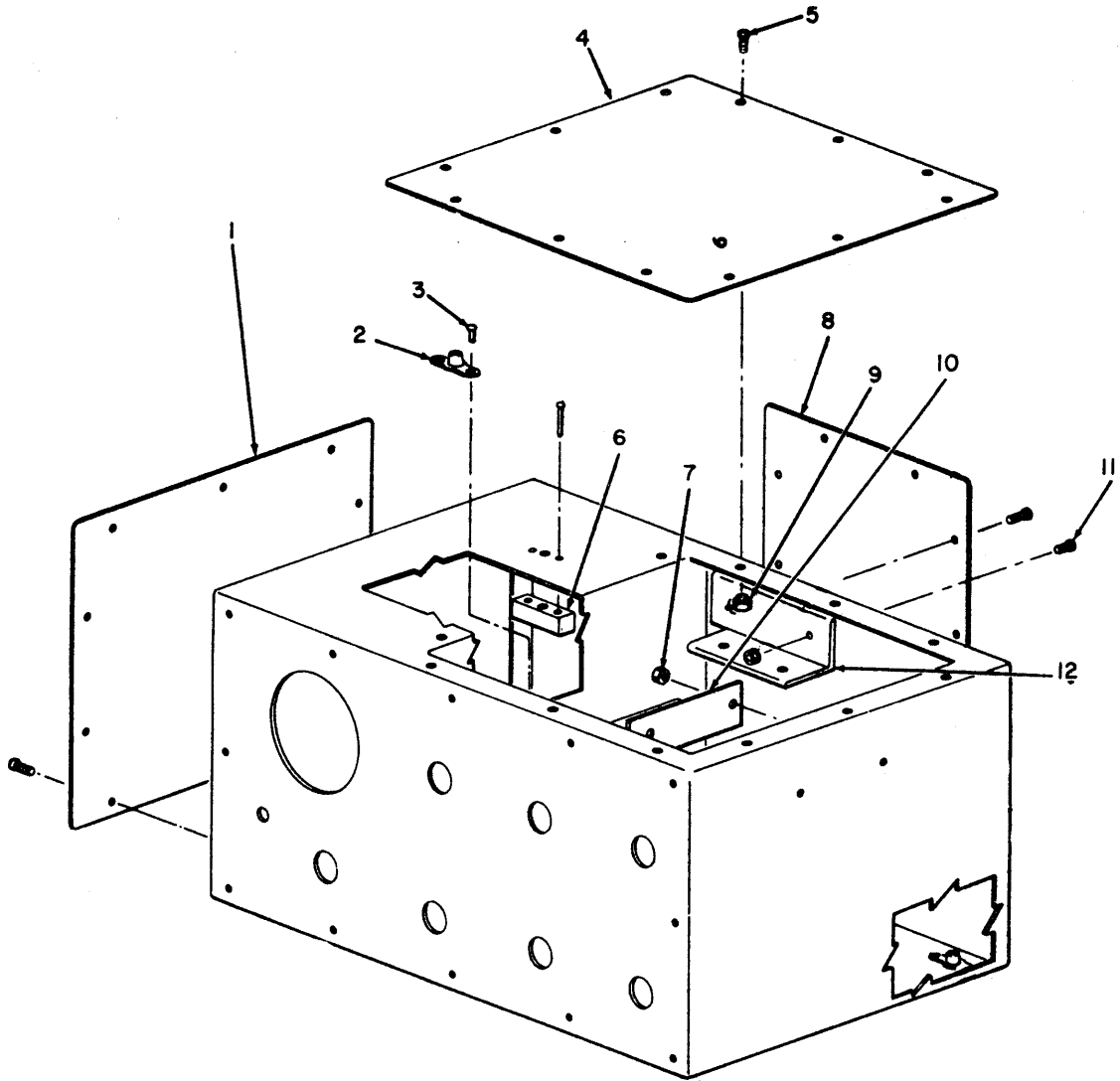


EL4LU010

Figure 7. Monitor Assembly 1A3A5

SECTION II

ILLUSTRATION		SMR CODE	NATIONAL STOCK NUMBER	PART NUMBER	FSCM	DESCRIPTION USABLE ON CODE	U/M	QTY INC IN UNIT
(a) FIG NO.	(b) ITEM NO.							
						GROUP 010302 MONITOR ASSEMBLY 1A3A5		
7	1	PAHZZ	5310-00-933-8119	MS35330-137	96906	WASHER,LOCK	EA	12
7	2	PAHZZ	5305-00-054-6656	MS51957-32	96906	SCREW,MACHINE	EA	1
7	3	PAHZZ	5950-00-451-7597	100-1874-1	12868	TRANSFORMER MODEL T-494-D	EA	1
7	4	PAHZZ	5310-00-933-8119	MS35338-137	96906	WASHER,LOCK	EA	9
7	5	PAHZZ	5305-00-054-6670	MS51957-45	96906	SCREW,MACHINE	EA	12
7	6	PAHZZ	5950-00-452-0902	100-1873-1	26512	TRANSFORMER,MODEL T-493-D	EA	1
7	7	PAHZZ	5305-00-054-6650	MS51957-26	96906	SCREW,MACHINE	EA	4
7	8	XDHHH		134SEAV14074-1	26512	BOARD ASSY,COMPONENT	EA	1
7	9	PAHZZ	5930-00-254-2302	M3786-4-0004	81349	SWITCH	EA	1
7	10	PAHZZ	5930-00-919-8013	3-1900-3816C	26512	SWITCH,ROTARY	EA	2
7	11	PAHZZ	5930-00-451-7619	1905MU2-5	26512	SWITCH,ROTARY	EA	1
7	12	PAHZZ	5930-00-410-5415	M3786-4-0002	81349	SWITCH	EA	1
7	13	PAHZZ	5930-00-434-8866	M3786-4-0006	81349	SWITCH	EA	1
7	14	PAHZZ	5930-00-452-0920	M3786-4-0093	81349	SWITCH	EA	1
7	15	XDHHH		134SEAV14068-5	26512	BOX ASSY,MONITOR	EA	1
7	16	PAHZZ	5905-00-455-0819	GA2T040S254UA	26512	RESISTOR	EA	1
7	17	XDHZZ		GS550006C5	26512	SCREW	EA	3
7	18	XDHZZ		03-0101-6849	12881	GASKET ASSY	EA	1
7	19	XDHHH		134SEAV14073-3	26512	BOARD ASSY,COMPONENT	EA	1
7	20	PAHZZ	5310-00-722-5998	MS15795-805	96906	WASHER,FLAT	EA	4
7	21	PAHZZ	5305-00-494-7334	MS51957-28	96906	SCREW,MACHINE	EA	4
7	22	XDHHH		134SEAV14071-1	26512	HOUSING ASSY,TUBE	EA	1
7	23	XDHZZ		MS3114H20C41P	96906	CONNECTOR	EA	1
7	24	PAHZZ	5365-00-158-0277	G1285-4	06324	RING	EA	2
7	25	PAHZZ	5940-00-857-3414	D144-00	06090	SPLICE	EA	20
7	26	PAHZZ	5935-00-716-9009	MS3114H22C21PW	96906	CONNECTOR	EA	1
7	27	XDHZZ		D146-02	26512	SPLICE	EA	15
7	28	PAHZZ	5935-00-716-9009	MS3114H22C21P	96906	CCNNECTOR	EA	1

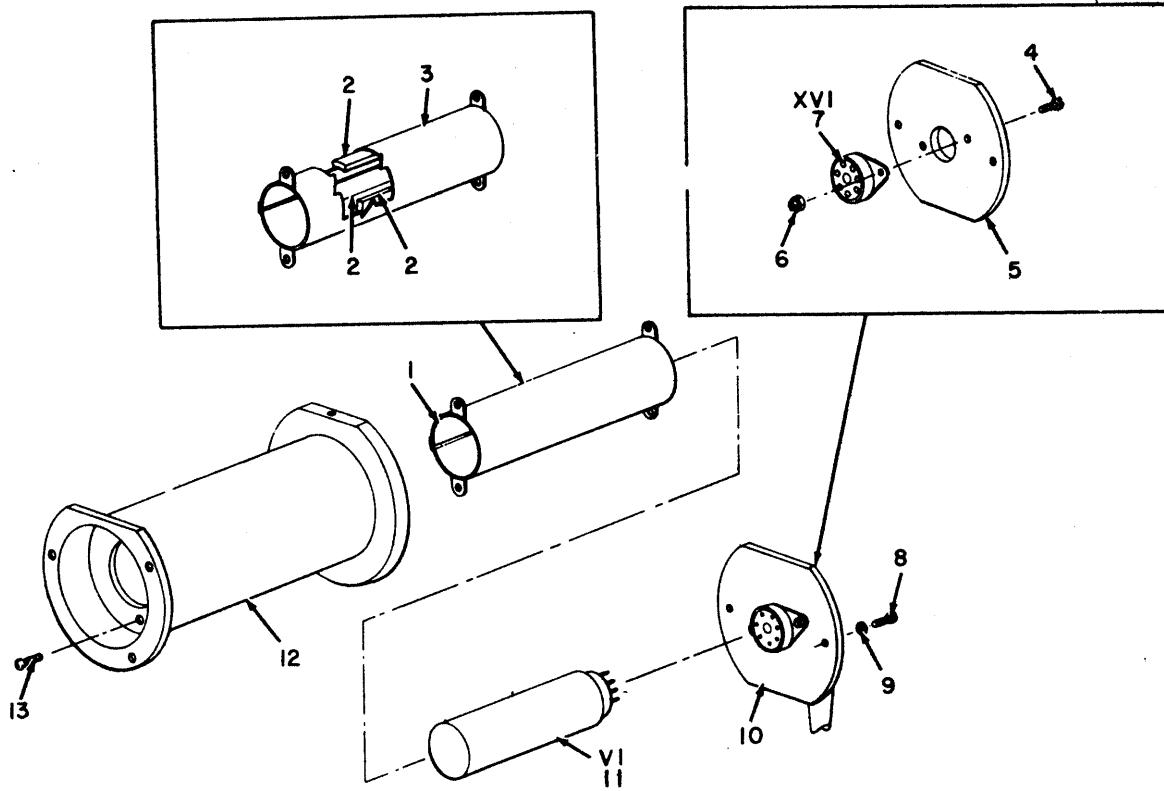


EL4LU011

Figure 8. Monitor Box Assembly 1A3A5A3.

SECTION II

ILLUSTRATION		SMR CODE	NATIONAL STOCK NUMBER	PART NUMBER	FSCM	DESCRIPTION USABLE ON CODE	U/M	QTY INC IN UNIT
(a) FIG NO.	(b) ITEM NO.							
						GROUP 01030201 MONITOR BOX ASSEMBLY 1A3A5A3		
8	1	XDHZZ		134SEAV14068-21	26512	COVER	EA	1
8	2	XDHZZ		NAS666C3	26512	PLATE,NUT	EA	2
8	3	XDHZZ		MS20426Ad3	96906	RIVET,SOLID	EA	6
8	4	XDHZZ		134SEAV14068-19	26512	CCVER	EA	1
8	5	PAHZZ	5305-00-054-6654	MS51957-30	96906	SCREW,MACHINE	EA	30
8	6	XDHZZ		134SEAV14068-15	26512	SPACER	EA	1
8	7	PAHZZ	5310-00-807-1473	NS21042L08	96906	NUT,SELF-LOCKING HEXAGON	EA	4
8	8	XDHZZ		134SEAV14068-17	26512	COVER	EA	1
8	9	PAHZZ	5310-00-819-9188	LKS632-2	46384	NUT	EA	45
8	10	XDHZZ		134SEAV14068-25	26512	BRACKET	EA	1
8	11	PAHZZ	5305-00-054-6670	MS51957-45	96906	SCREW,MACHINE	EA	4
8	12	XDHZZ		134SEAV14068-23	26512	BRACKET	EA	1

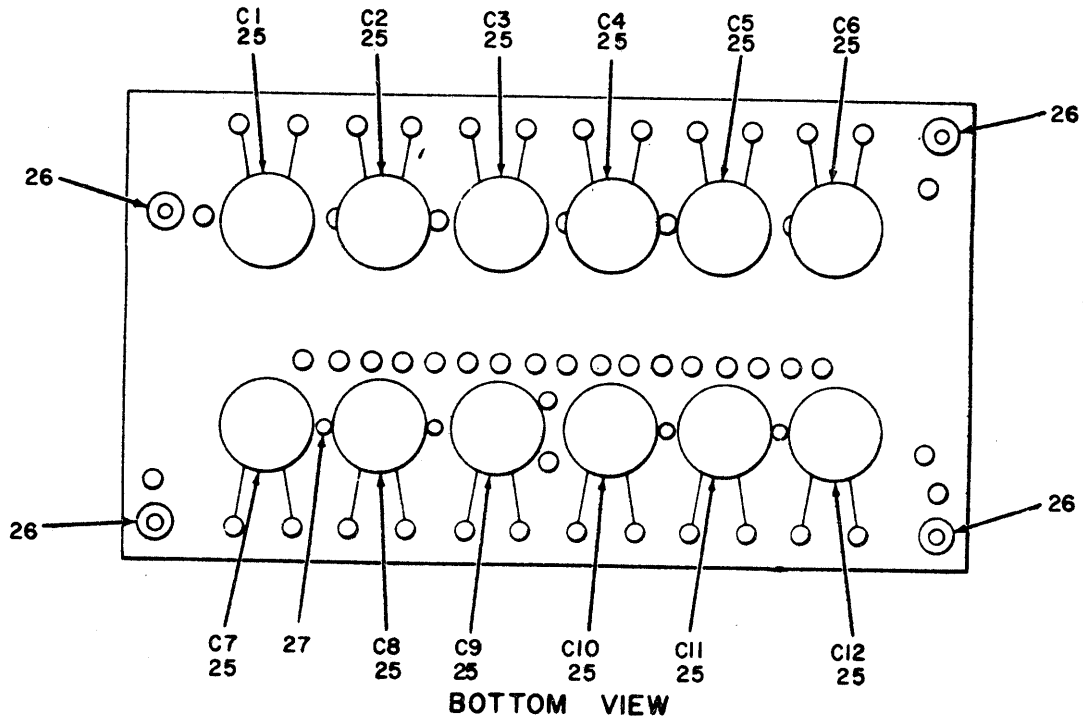
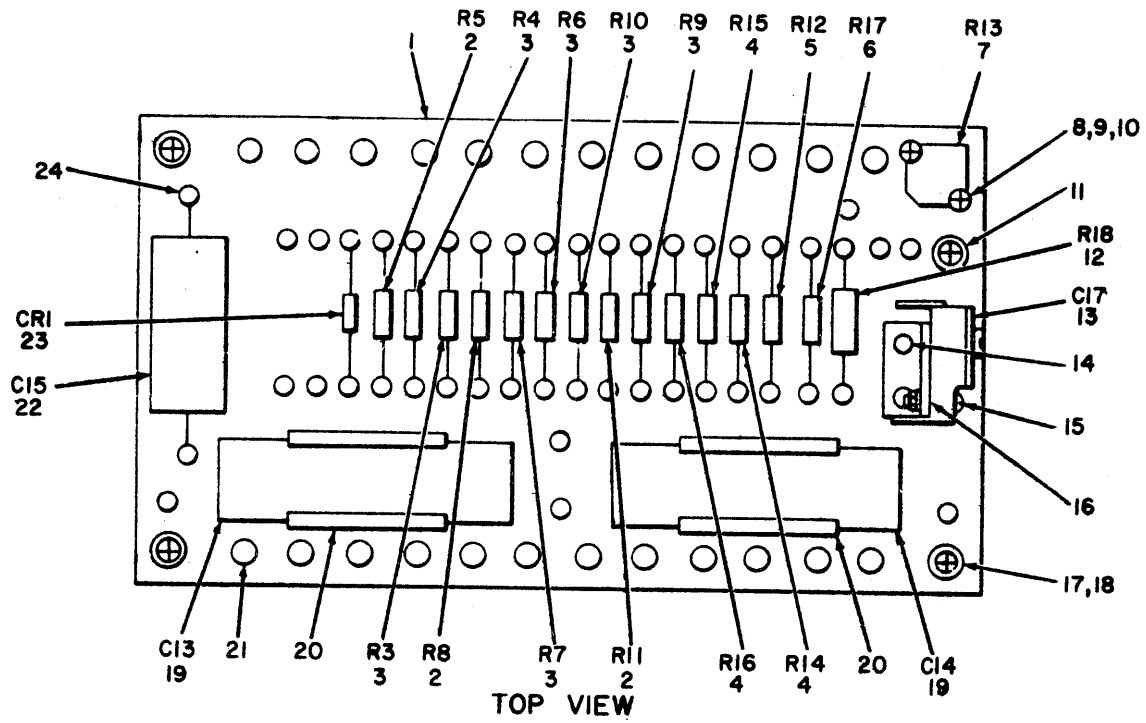


EL4LJ012

Figure 9. Tube Housing Assembly 1A3A5A4.

SECTION II

ILLUSTRATION		SMR CODE	NATIONAL STOCK NUMBER	PART NUMBER	FSCM	DESCRIPTION USABLE ON CODE	U/M	QTY INC IN UNIT
(a) FIG NO.	(b) ITEM NO.							
						GROUP 01030202 TUBE HOUSING ASSEMBLY 1A3A5A4		
9	1	XDHZZ		134SEAV14071-5	26512	SHIELD ASSY	EA	1
9	2	XDHZZ		134SEAV14071-13	26512	BUMPER	EA	3
9	3	PAHZZ	5960-00-163-1002	80801F	26512	SHIELD	EA	1
9	4	PAHZZ	5305-00-889-2997	MS35206-215	96906	SCREW,MACHINE	EA	2
9	5	XDHZZ		134SEAV14071-11	26512	PLATE	EA	1
9	6	PAHZZ	5310-00-807-1471	MS21042L04	96906	NUT,SELF-LCCKING HEXAGON	EA	2
9	7	PAHZZ	5935-00-451-7599	134SEAV14071-17	26512	SOCKET	EA	1
9	8	PAHZZ	5305-00-984-4968	MS35206-228	96906	SCREW,MACHINE	EA	2
9	9	PAHZZ	5310-00-531-9514	MS35338-136	96906	WASHER,LOCK	EA	2
9	10	XDHHH		134SEAV14071-3	26512	SOCKET ASSY	EA	1
9	11	XDHZZ		1E21P27	26512	TUBE,ELECTRON	EA	1
9	12	XDHZZ		134SEME14004-1	26512	HOUSING ASSY	EA	1
9	13	PAHZZ	5305-00-984-4982	MS35206-225	96906	SCREW,MACHINE	EA	2



EL4LU013

Figure 10. Component Board Assembly 1A3A5A1.

SECTION II

ILLUSTRATION		SMR CODE	NATIONAL STOCK NUMBER	PART NUMBER	FSCM	DESCRIPTION USABLE ON CODE	U/M	QTY INC IN UNIT
(a) FIG NO.	(b) ITEM NO.							
						GROUP 01030203 COMPONENT BOARD ASSEMBLY		
						1A3A5A1		
10	1	XDHZZ		134SEAV14073-13	26512	BOARD,COMPONENT	EA	1
10	2	PAHZZ	5905-00-455-0824	RLR20C394GR	81349	RESISTOR	EA	3
10	3	PAHZZ	5905-00-455-0825	RLR32CB824GM	81349	RESISTOR	EA	4
10	4	PAHZZ	5905-00-114-5456	RCR206GF684J	81349	RESISTOR	EA	3
10	5	XDHZZ		RCR20GF514JM	81349	RESISTOR	EA	1
10	6	PAHZZ	5905-00-104-8349	RCR20G511JR	81349	RESISTOR	EA	1
10	7	PAHZZ	5905-00-132-4367	RJ22CL504	81349	POTENTIOMETER	EA	1
10	8	PAHZZ	5310-00-595-6761	MS15795-802	96906	WASHER,FLAT	EA	4
10	9	PAHZZ	5310-00-880-7010	MS21042L02	96906	NUT,SELF-LOCKING HEXAGON	EA	4
10	10	PAHZZ	5305-00-954-3938	MS35206-207	96906	SCREW	EA	2
10	11	PAHZZ	5305-00-054-6651	MS51957-27	96906	SCREW,MACHINE	EA	4
10	12	PAHZZ	5905-00-106-9346	RCR32G103JR	81349	RESISTOR	EA	1
10	13	PAHZZ	5910-00-578-1623	CV11C450	81349	CAPACITOR	EA	1
10	14	XDHZZ		MS20426AD2	96906	RIVET,SOLID	EA	2
10	15	XDHZZ		MS35206-208	96906	SCREW	EA	2
10	16	XDHZZ		134SEAV14073-15	26512	BRACKET	EA	1
10	17	PAHZZ	5310-00-722-5998	MS15795-805	96906	WASHER,FLAT	EA	4
10	18	PAHZZ	5310-00-011-1041	MS35338-79	96906	WASHER	EA	4
10	19	XDHZZ		CQ09A16104K3	81349	CAPACITOR	EA	2
10	20	PAHZZ	5340-00-159-3844	NAS1464-074-120	80205	CLIP	EA	2
10	21	PAHZZ	5940-00-901-1179	SE14XC02	81349	TERMINAL	EA	45
10	22	PAHZZ	5910-00-451-7609	CQ09A1KG223K3	81349	CAPACITOR	EA	1
10	23	PAHZZ	5961-00-064-2379	JAN1N649	81349	DIODE	EA	1
10	24	PAHZZ	5940-00-052-9068	SE12XC05	81349	TERMINAL	EA	24
10	25	PAHZZ	5910-00-845-6974	CK64AW332M	81349	CAPACITOR	EA	12
10	26	XDHZZ		350-3935-05-07-0 0	26512	SPACER	EA	4
10	27	PAHZZ	5320-00-948-7332	MS16535-115	96906	REVIT, SOLID	EA	4

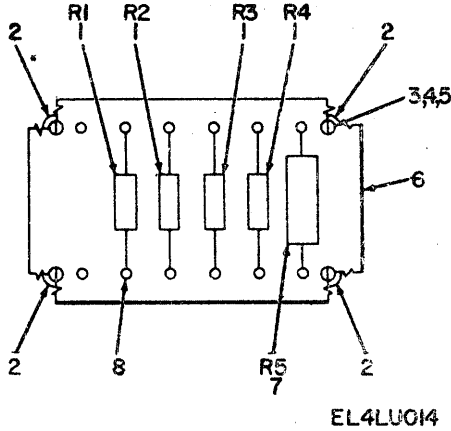
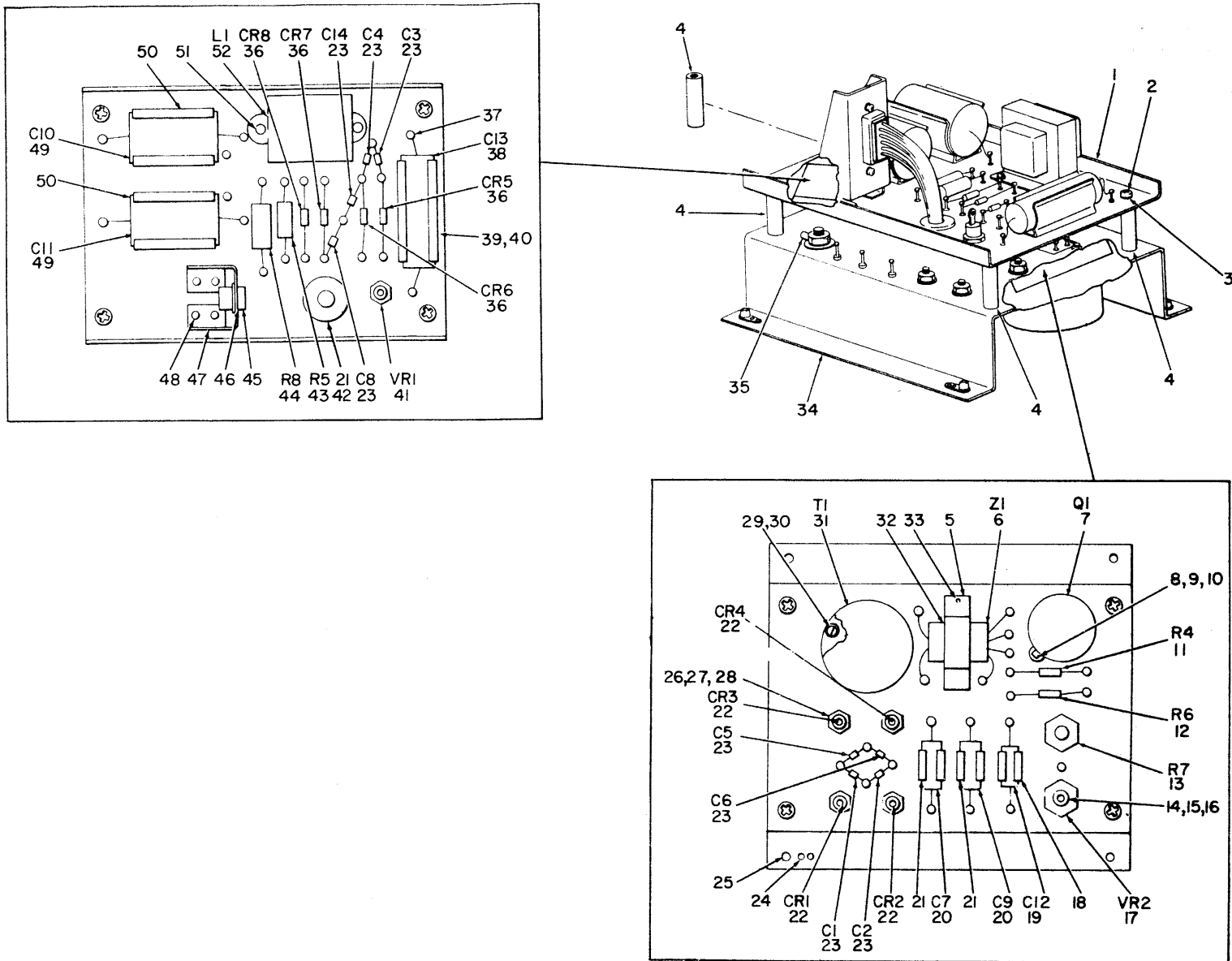


Figure 11. Component Board Assembly 1A3A5A2.

SECTION II

ILLUSTRATION		SMR CODE	NATIONAL STOCK NUMBER	PART NUMBER	FSCM	DESCRIPTION USABLE ON CODE	U/M	QTY INC IN UNIT
(a) FIG NO.	(b) ITEM NO.							
						GROUP 01030204 COMPONENT BOARD ASSEMBLY 1A3A5A2		
11	1	PAHZZ	5905-00-111-8372	RCR32G222JM	81349	RESISTOR	EA	4
11	2	XDHZZ		350-3935-05-07-0 0	26512	SPACER	EA	4
11	3	PAHZZ	5310-00-722-5998	MS15795-805	96906	WASHER,FLAT	EA	4
11	4	PAHZZ	5310-00-011-1041	MS35338-79	96906	WASHER	EA	4
11	5	PAHZZ	5305-00-054-6651	MS51957-27	96906	SCREW,MACHINE	EA	4
11	6	XDHHH		134SEAV14074-11	26512	BOARD COMPONENT	EA	1
11	7	PAHZZ	5905-00-563-1598	RWR74S3010FM	81349	RESISTOR	EA	1
11	8	PAHZZ	5940-00-052-9068	SE12XC05	81349	TERMINAL	EA	12



EL4LU015

Figure 12. Power Supply 1A3A1.

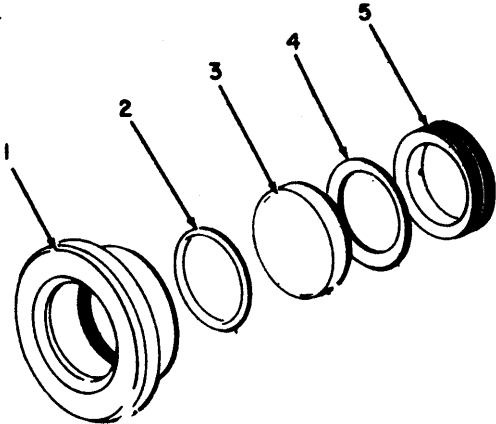
SECTION II

ILLUSTRATION		SMR CODE	NATIONAL STOCK NUMBER	PART NUMBER	FSCM	DESCRIPTION USABLE ON CODE	U/M	QTY INC IN UNIT
(a) FIG NO.	(b) ITEM NO.							
						GROUP 010303 POWER SUPPLY 1A3A1		
12	1	XDHHH		134SEAV14069-5	26512	CHASSIS ASSY	EA	1
12	2	PAHZZ	5310-00-531-9514	MS35338-136	96906	WASHER,LOCK	EA	8
12	3	PAHZZ	5305-00-054-6650	MS51957-26	96906	SCREW,MACHINE	EA	8
12	4	XDHZZ		8162SS06332-7	26512	SPACER	EA	4
12	5	XDHZZ		134SEAV14069-17	26512	BRACKET	EA	1
12	6	XDHZZ		1828-2-1	26512	REGULATOR,VOLTAGE	EA	1
12	7	PAHZZ	5961-00-893-9563	JAN2N10168	81349	TRANSISTOR	EA	1
12	8	PAHZZ	5310-00-140-4870	MS25082-S5	96906	NUT	EA	1
12	9	PAHZZ	5310-00-974-6623	MS35338-140	96906	WASHER,LOCK	EA	1
12	10	XDHZZ		293236	26512	WASHER	EA	2
12	11	PAHZZ	5905-00-913-4338	RW79UR499F	81349	RESISTOR	EA	1
12	12	XDHZZ		RCR32G471JM	81349	RESISTOR	EA	1
12	13	PAHZZ	5905-00-542-7810	RA20LASB202A	81349	RESISTOR	EA	1
12	14	PAHZZ	5310-00-869-1018	MS20341-416A	96906	NUT	EA	1
12	15	PAHZZ	5310-00-933-8121	MS35338-139	96906	WASHER,LOCK	EA	1
12	16	XDHZZ		293075	26512	WASHER	EA	2
12	17	PAHZZ	5961-00-400-4729	1N45548	26512	DIODE	EA	1
12	18	PAHZZ	5340-00-833-8510	NAS1464-036-06C	80205	CLIP	EA	1
12	19	XDHZZ		M39003-01-2278	26512	CAPACITOR	EA	1
12	20	PAHZZ	5910-00-010-4913	M39006-09-1188	81349	CAPACITOR	EA	2
12	21	PAHZZ	5340-00-948-9782	NAS1464-040-06C	80205	CLIP	EA	2
12	22	PAHZZ	5961-00-978-5966	JANIN1614	81349	DIODE	EA	4
12	23	PAHZZ	5910-00-116-8653	M39014-02-0218	81349	CAPACITOR	EA	8
12	24	XDHZZ		MS20426AD3	96906	RIVET,SOLID	EA	12
12	25	PAHZZ	5310-00-842-8996	NAS696A06L	80205	PLATE,NUT	EA	4
12	26	XDHZZ		MS20341-10A	96906	NUT	EA	5
12	27	PAHZZ	5310-00-933-8120	MS35338-138	96906	WASHER	EA	5
12	28	PAHZZ	5970-00-151-9086	293422	76530	WASHER	EA	10
12	29	PAHZZ	5310-00-934-9757	MS20341-85	969061	NUT	EA	3
12	30	PAHZZ	5310-00-933-8119	MS35338-137	96906	WASHER	EA	1
12	31	PAHZZ	5950-00-452-0871	TW63140	26512	TRANSFORMER	EA	1
12	32	XDHZZ		134SEAV14069-19	26512	CUSHION	EA	1
12	33	PAHZZ	5305-00-054-5648	MS51957-14	96906	SCREW,MACHINE	EA	4
12	34	XDHHH		134SEAV14069-31	26512	CHASSIS ASSY	EA	1
12	35	PAHZZ	5940-00-113-8184	MS25036-150	96906	LUG,TERMINAL	EA	1
12	36	XDHZZ		JAN1N4245	26512	DIODE	EA	4
12	37	PAHZZ	5940-00-578-3484	FTSM1TUR	98291	TERMINAL	EA	20
12	38	XDHZZ		M39018-03-0279	81341	CAPACITOR	EA	1
12	39	PAHZZ	5340-00-159-3843	NAS1464-065-200	80205	CLIP	EA	1

SECTION II

ILLUSTRATION		SMR CODE	NATIONAL STOCK NUMBER	PART NUMBER	FSCM	DESCRIPTION USABLE ON CODE	U/M	QTY INC IN UNIT
(a) FIG NO.	(b) ITEM NO.							
12	40	XDHZZ		MS20470AD4	96906	RIVET,SOLID	EA	1
12	41	PAHZZ	5961-00-061-8239	JAN1N3008B	81349	DIODE	EA	1
12	42	PAHZZ	5325-00-276-6228	MS35489-9	96906	GROMMET	EA	1
12	43	PAHZZ	5905-00-192-3959	RC42GF201J	81349	RESISTOR	EA	1
12	44	PAHZZ	5905-00-038-5916	RWR74S1001FM	81349	RESISTOR	EA	1
12	45	PAHZZ	5935-00-410-9250	M24308-2-3	81349	CONNECTOR	EA	1
12	46	PAHZZ	5935-00-898-0494	D20418-2	26512	SCREW	EA	2
12	47	XDHZZ		134SEAV14069-15	26512	BRACKET	EA	1
12	48	XDHZZ		MS20470AD3	96906	RIVET	EA	4
12	49	PAHZZ	5910-00-451-7615	M39018-03-0287	81349	CAPACITOR	EA	2
12	50	PAHZZ	5340-00-159-3845	NAS1464-101-16C	80205	CLIP	EA	2
12	51	PAHZZ	5310-00-818-3292	MS21043-04	96906	NUT	EA	4
12	52	PAHZZ	5950-00-989-4424	H106	26512	CHOKE	EA	1

36/(37 blank)



EL4LJ016

Figure 13. Bezel Assembly 1A3A7.

SECTION II

ILLUSTRATION		SMR CODE	NATIONAL STOCK NUMBER	PART NUMBER	FSCM	DESCRIPTION USABLE ON CODE	U/M	QTY INC IN UNIT
(a) FIG NO.	(b) ITEM NO.							
13	1	XDHZZ		134SEME14005-1	26512	GROUP 010304 BEZEL ASSEMBLY 1A3A7 BEZEL	EA	1
13	2	PAHZZ	5330-00-171-6649	MS28775-223	96906	C-RING	EA	1
13	3	PAHZZ	6660-00-176-0077	BRC15-000	26512	LENS.ACHROMATIC	EA	1
13	4	XDHZZ		134SEME14007-1	26512	WASHER	EA	1
13	5	XDHZZ		134SEME14003-1	26512	LOCK,RING	EA	1

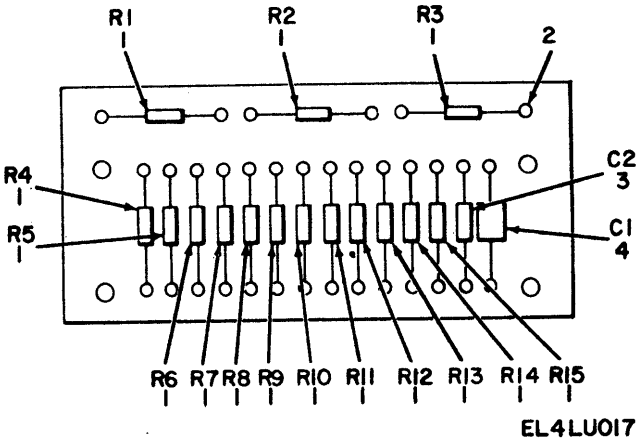


Figure 14. Component Board 1A3A4.

SECTION II

ILLUSTRATION		SMR CODE	NATIONAL STOCK NUMBER	PART NUMBER	FSCM	DESCRIPTION USABLE ON CODE	U/M	QTY INC IN UNIT
(a) FIG NO.	(b) ITEM NO.							
14	1	XDHZZ		RCR07G2727JM	26512	GROUP 010305 COMPONENT BOARD 1A3A4 RESISTOR	EA	15
14	2	XDHZZ		GT11H3B	26512	TERMINAL	EA	34
14	3	PAHZZ	5910-00-997-4078	M39003-01-20-8	81349	CAPACITOR	EA	1
14	4	PAHZZ	5910-00-116-8653	M39014-02-0218	81349	CAPACITCR	EA	1

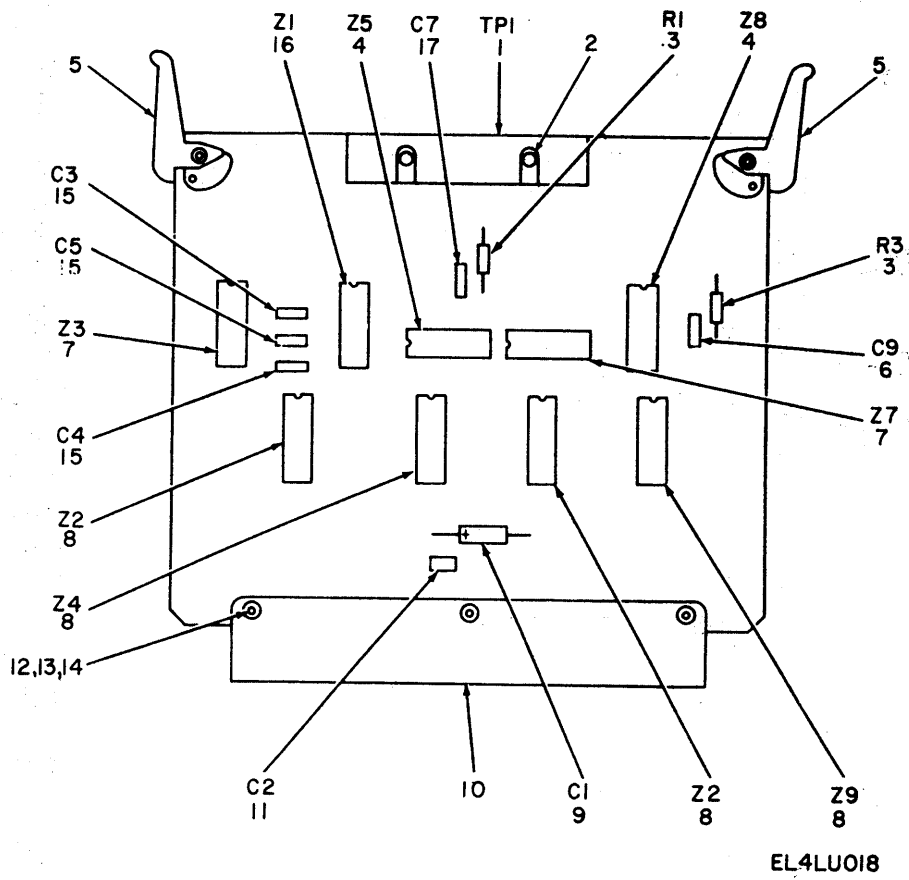


Figure 15. Board Assembly, Simulator 1A3A3.

SECTION II

ILLUSTRATION		SMR CODE	NATIONAL STOCK NUMBER	PART NUMBER	FSCM	DESCRIPTION USABLE ON CODE	U/M	QTY INC IN UNIT
(a) FIG NO.	(b) ITEM NO.							
						GROUP 010306 BOARD ASSEMBLY,SIMULATOR 1A3A3		
15	1	XDDZZ		672-13GD	26512	CONNECTOR PLUG	EA	1
15	2	XDDZZ		MS16535-55	96906	RIVET,SOLID	EA	2
15	3	PADZZ	5905-00-754-7851	RCK07G123JM	81349	RESISTOR	EA	2
15	4	PADZZ	5962-00-102-7500	U6A995151X	87216	MICROCIRCUIT	EA	2
15	5	XDDZZ		S207	26512	EJECTOR	EA	2
15	6	PADZZ	5910-00-136-3732	M39014-02-0206	81349	CAPACITOR	EA	1
15	7	PADZZ	5962-00-102-7501	U6A993251X	26512	MICROCIRCUIT	EA	2
15	8	PADZZ	5962-00-405-8456	U6A901651X	26512	MICROCIRCUIT	EA	4
15	9	PADZZ	5910-00-936-1522	M39003-01-2046	81349	CAPACITOR	EA	1
15	10	XDDZZ		PE1011	03877	CONNECTOR.PLUG	EA	1
15	11	PAOZZ	5910-00-022-5655	M39014-01-0237	81349	CAPACITOR	EA	1
15	12	PADZZ	5305-00-889-2997	MS35206-215	96906	SCREW, MACHINE PAN HEAD	EA	3
15	13	PADZZ	5310-00-543-2410	MS35338-40	96906	WASHER,LOCK	EA	3
15	14	PADZZ	5310-00-660-3372	NAS620A4L	80205	WASHER FLAT	EA	3
15	15	PADZL	5910-00-116-8653	M39014-02-0218	81349	CAPACITOR	EA	3
15	16	PAOZZ	5962-00-420-6493	U6A993651X	07263	MICROCIRCUIT	EA	1
15	17	PADZZ	5910-00-497-9171	M39014-02-0221	81349	CAPACITOR	EA	1

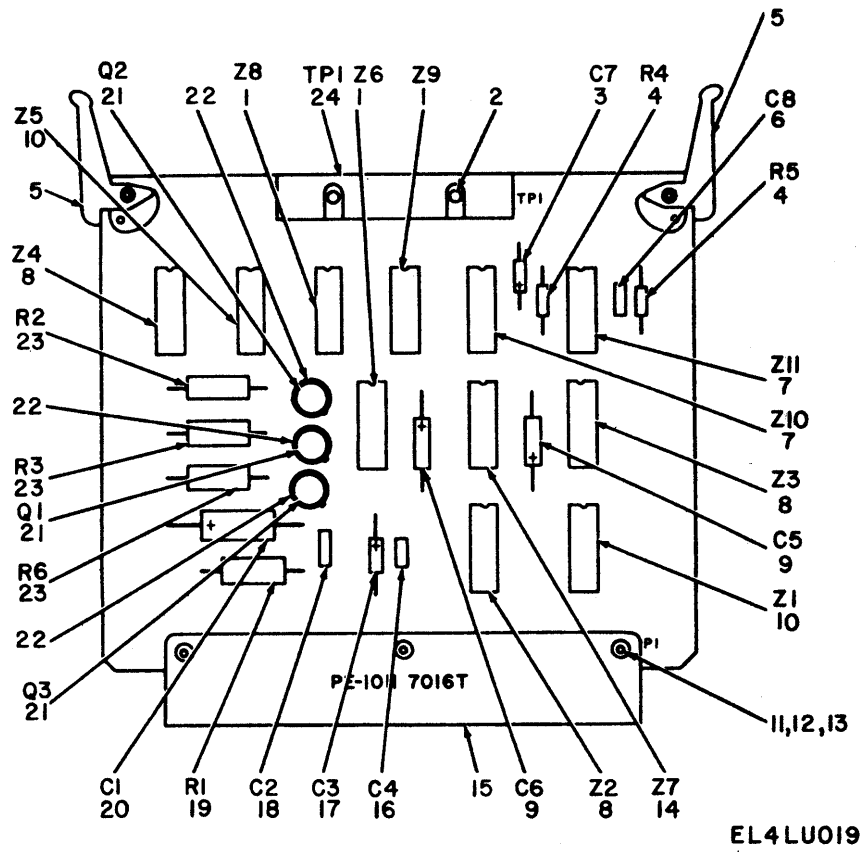


Figure 16. Display and Data Demand Board Assembly 1A3A2.

SECTION II

ILLUSTRATION		SMR CODE	NATIONAL STOCK NUMBER	PART NUMBER	FSCM	DESCRIPTION USABLE ON CODE	U/M	QTY INC IN UNIT
(a) FIG NO.	(b) ITEM NO.							
						GROUP 010307 DISPLAY AND DATA DEMAND BOARD ASSEMBLY 1A3A2		
16	1	PAOZZ	5962-00-136-3231	U6A994651X	07263	MICROCIRCUIT	EA	3
16	2	XDDZZ		MS16535-55	96906	RIVET,SOLID	EA	2
16	3	PADZZ	5910-00-403-8830	M39003-02-0008	81349	CAPACITOR	EA	1
16	4	PADZZ	5505-00-728-6132	RCR07G153JM	81349	RESISTOR	EA	2
16	5	XDDZZ		S2C7	26512	EJECTOR	EA	2
16	6	PADZZ	5910-00-497-9171	M39014-02-0221	81349	CAPACITOR	EA	1
16	7	PADZZ	5962-00-102-7500	U6A995151X	87216	MICROCIRCUIT	EA	2
16	8	PADZZ	5962-00-102-7501	U6A993251X	87216	MICROCIRCUIT	EA	3
16	9	PADZZ	5910-00-018-1418	M39003-01-2304	81349	CAPACITOR	EA	2
16	10	PADZZ	5962-00-420-6493	U6A993651X	07263	MICROCIRCUIT	EA	2
16	11	PADZZ	5305-00-889-2997	MS35206-215	96906	SCREW,MACHINE-PAN HEAD	EA	3
16	12	PADZZ	5310-00-543-2410	MS35338-40	96906	WASHER,LOCK	EA	3
16	13	PADZZ	5310-00-660-3372	NAS620A4L	80205	WASHER,FLAT	EA	3
16	14	PADZZ	5962-00-473-0369	U6A994551X	26512	MICROCIRCUIT	EA	1
16	15	XDDZZ		PE1011	26512	CONNECTOR,PLUG	EA	1
16	16	PADZZ	5910-00-022-5655	M39014-01-0237	81349	CAPACITOR	EA	1
16	17	PADZZ	5910-00-868-6219	M39003-01-2268	81349	CAPACITOR	EA	1
16	18	PADZZ	5910-00-116-8653	M39014-02-0218	81349	CAPACITOR	EA	1
16	19	XDDZZ		RCR32G101JM	81349	RESISTOR	EA	1
16	20	PAHZZ	5910-00-068-3884	M39003-01-2374	81349	CAPACITOR	EA	1
16	21	PADZZ	5961-00-813-9360	JAN2N1613	81349	TRANSISTOR	EA	3
16	22	PADZZ	5961-00-946-7708	7717-4DAP	13103	PAD,ELECTRICAL MOUNT	EA	3
16	23	PADZZ	5905-00-246-9399	RCR32G202JM	81349	RESISTOR	EA	3
16	24	XDDZZ		672-13GD	26512	CONNECTOR,PLUG	EA	1

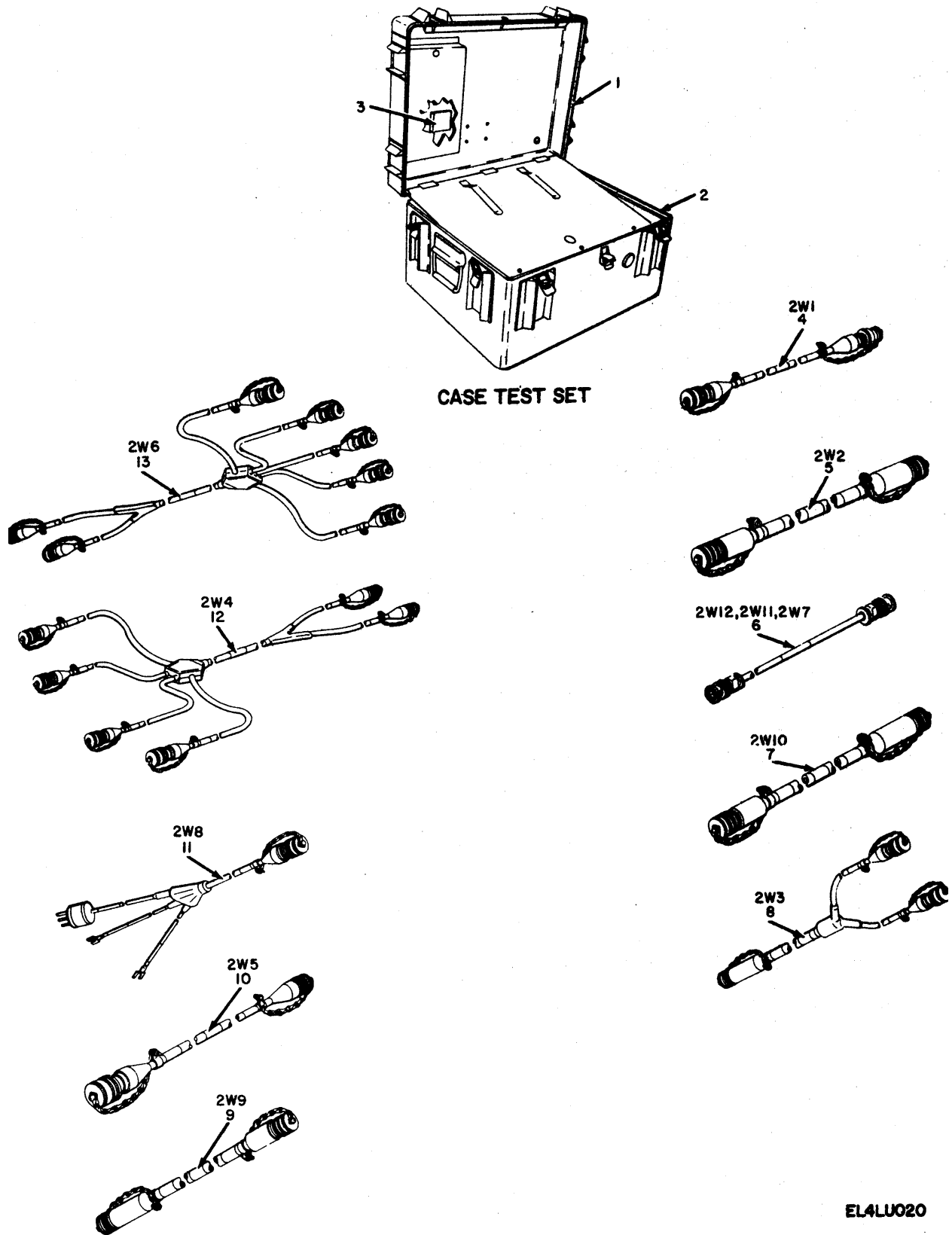
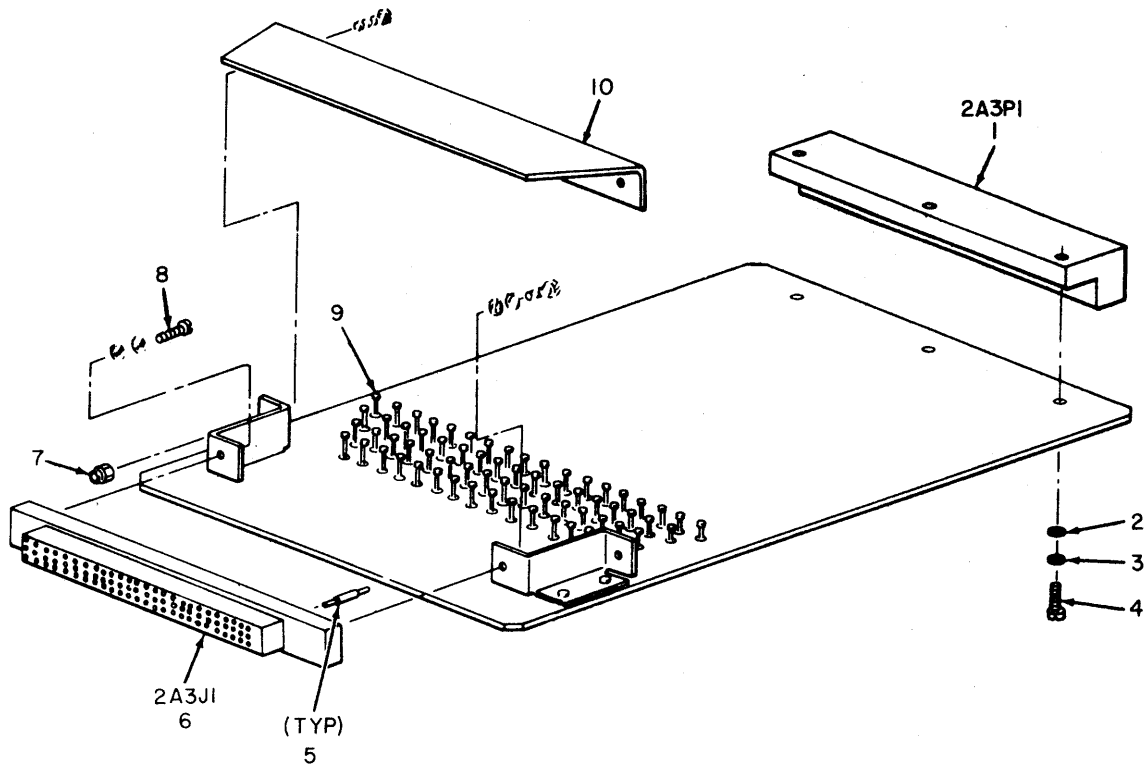


Figure 17. Case Test Set CY-7114/AYM-8.

EL4LU020

SECTION II

ILLUSTRATION		SMR CODE	NATIONAL STOCK NUMBER	PART NUMBER	FSCM	DESCRIPTION USABLE ON CODE	U/M	QTY INC IN UNIT
(a) FIG NO.	(b) ITEM NO.							
						GROUP 02 CASE TEST SET CY-7114/AYM-8		
17	1	XDHHH		08725-3	26512	CASE,COVER,ASSY	EA	1
17	2	XDHHH		134SEAV14077-1	26512	BASE ASSEMBLY	EA	1
17	3	PAOHH	6625-00-233-9198	MX8966AYN	26512	EXTENDER,CIRCUIT CARD	EA	1
17	4	PAOHH	5995-00-451-0440	CX12714AYM8	26512	CABLE ASSY.POWER-ELECTRICAL	EA	1
17	5	PAOHH	5995-00-451-1180	CX12715AYM8	26512	CABLE ASSY,SPEC-PURP,ELECT	EA	1
17	6	PAOHH	5995-00-451-0445	CG3679AYM8	80058	CABLE ASSY,RADIO FREQUENCY	EA	3
17	7	PAOHH	6625-00-432-2384	CX12722AYM8	26512	CABLE ASSY,SPEC PURPOSE,ELEC	EA	1
17	8	PAOHH	6625-00-186-6142	CX12716AYM8	26512	CABLE ASSY,SPEC-PURP.BRANCHED	EA	1
17	9	PAOHH	5995-00-451-4953	CX12721AYM8	26512	CABLE ASSY,SPEC PURPOSE,ELEC	EA	1
17	10	PAOHH	5995-00-449-9333	CX12718AYM8	26512	CABLE ASSY,SPEC PURPOSE,ELEC	EA	1
18	11	PAOHH	5995-00-449-9344	CX12724AYM8	26512	CABLE ASSY,PWR-ELECT,BRANCHED	EA	1
17	12	PAOHH	6625-00-191-2104	CX12717AYM8	26512	CABLE ASSY SPEC-PURP,BRANCHED	EA	1
17	13	PAOHH	6625-00-186-6151	CX12719AYM8	26512	CABLE ASSY,SPEC-PURP,BRANCHED	EA	1

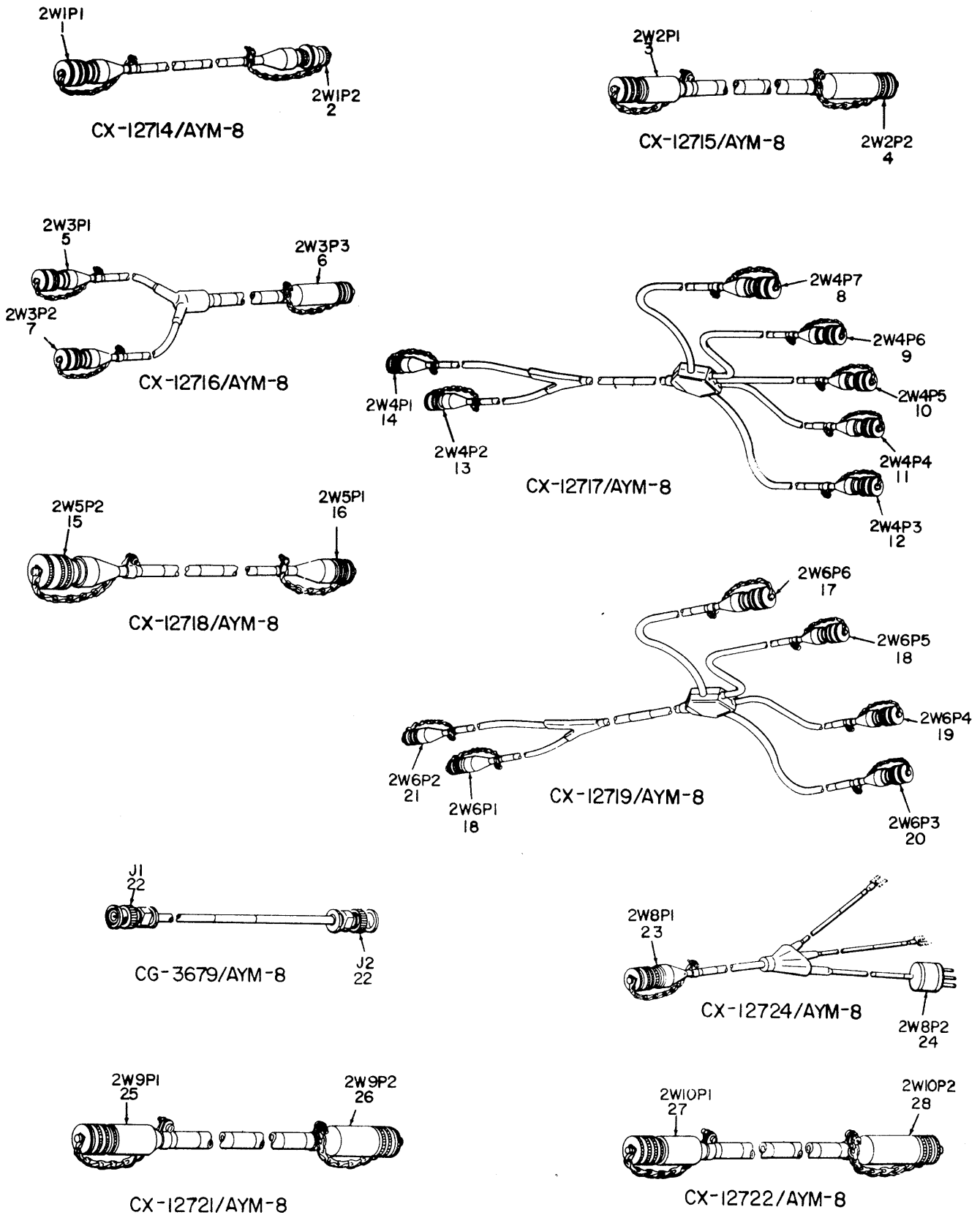


EL4LU021

Figure 18. Extender Circuit Card MX-8966/AYM.

SECTION II

ILLUSTRATION		SMR CODE	NATIONAL STOCK NUMBER	PART NUMBER	FSCM	DESCRIPTION USABLE ON CODE	U/M	QTY INC IN UNIT
(a) FIG NO.	(b) ITEM NO.							
						GROUP 0201 EXTENDER CIRCUIT CARD MX-8966/AYM		
18	1	XDHZZ		PE1011	26512	CONNECTOR	EA	1
18	2	PAHZZ	5310-00-543-2410	MS35338-40	96906	WASHER,LOCK	EA	3
18	3	PAHZZ	5310-00-660-3372	NAS620A4L	80205	WASHER.FLAT	EA	3
18	4	PAHZZ	5305-00-889-2997	MS35206-215	96906	SCREW	EA	3
18	5	PAHZZ	5999-00-420-7175	96S22F03	03877	CONTACT	EA	66
18	6	PAHZZ	5935-00-465-4193	PE1009	03877	CONNECTOR	EA	1
18	7	PAHZZ	5310-00-807-1471	MS21042L04	96906	NUT,SELF-LOCKING HEXAGON	EA	2
18	8	PAHZZ	5305-00-993-0190	MS35206-214	96906	SCREW,MACHINE	EA	3
18	9	PAHZZ	5940-00-901-2040	GT11H2A	26512	STUD,TERMINAL	EA	60
18	10	XDHZZ		134SEAV14116-13	26512	HOOD	EA	1



EL4LU022

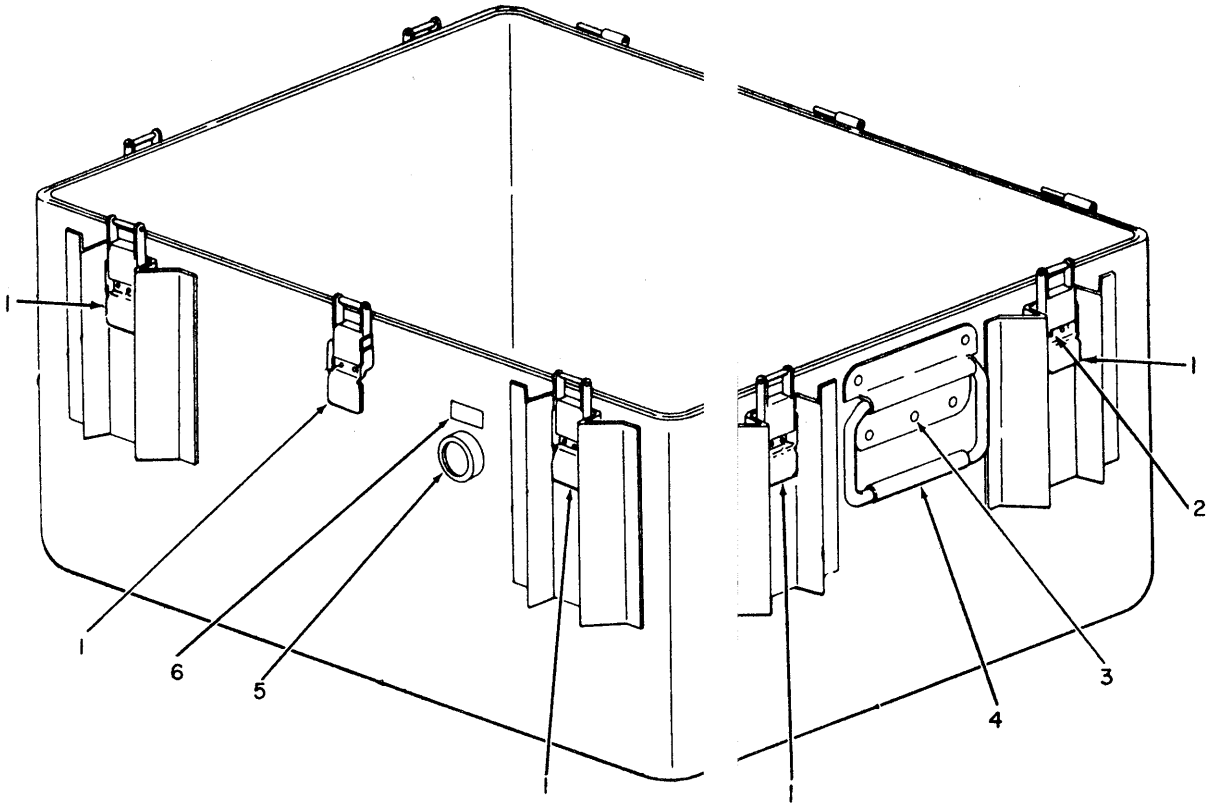
Figure 19. Cable Assemblies

SECTION II

ILLUSTRATION		SMR CODE	NATIONAL STOCK NUMBER	PART NUMBER	FSCM	DESCRIPTION USABLE ON CODE	U/M	QTY INC IN UNIT
(a) FIG NO.	(b) ITEM NO.							
19	1	PAHZZ	5935-00-817-9096	PT06A14-5S	06840	GROUP 0202 CABLE ASSEMBLY,POWER		
19	2	PAHZZ	5935-00-201-7983	MS3106A14S5P	96906	ELECTRICAL CX-12714/AYM-8 2W1 CONNECTOR,PLUG	EA	1
19	3	PAHZZ	5935-00-892-9332	MS3116F22-55S	96906	CONNECTOR	EA	1
19	4	PAHZZ	5935-00-451-7591	STK06-18-85PW059	11139	GROUP 0203 CABLE ASSEMBLY,SPECIAL PURPOSE, ELECTRICAL CX-12715/AYM-8 2W2	EA	1
19	5	XDHZZ		MS3116F22-41P	96906	CONNECTOR	EA	1
19	6	PAHZZ	5935-00-451-7590	STK06-18-85S059	11139	CCNECTOR	EA	1
19	7	PAHZZ	5935-00-892-9329	MS3116F22-55P	96906	CONNECTOR	EA	1
19	8	PAHZZ	5935-00-067-8296	MS3116F22-21S	96906	GROUP 0205 CABLE ASSEMBLY,SPECIAL PURPOSE, ELECTRICAL, BRANCHED CX-12717/AYM-8 2W4	EA	1
19	9	XDHZZ		MS3116F20-16PX	96906	CONNECTOR	EA	1
19	10	PAHZZ	5935-00-097-7569	MS3116F20-16PW	96906	CONNECTOR	EA	1
19	11	PAHZZ	5935-00-451-7620	MS3116F20-16PY	96906	CCNECTCR	EA	1
19	12	PAHZZ	5935-00-904-3090	MS3116F22-21SW	96906	CONNECTOR	EA	1
19	13	PAHZZ	5935-00-880-2670	MS3116F20-16P	96906	CONNECTOR	EA	1
19	14	XDHZZ		MS3116F22-41P	96906	CONNECTOR	EA	1
19	15	XDHZZ		STK06-10-19S059	11139	GROUP 0206 CABLE ASSEMBLY,SPECIAL PURPOSE, ELECTRICAL CX-12718/AYM-8 2W5	EA	1
19	16	PAHZZ	5935-00-880-2670	MS3116F20-16P	96906	CONNECTOR	EA	1
19	17	PAHZZ	5935-00-762-1497	MS3116F20-41P	96906	GPCUP 0207 CABLE ASSEMBLY,SPECIAL PURPOSE, ELECTRICAL, BRANCHED CX-12719/AYM-8 2W6	EA	1
19	18	PAHZZ	5935-00-892-9329	MS3116F22-55P	96906	CONNECTOR	EA	2
19	19	PAHZZ	5935-00-904-3090	MS3116F22-21SW	96906	CONNECTOR	EA	1
19	20	XDHZZ		MS3116F22-41P	96906	CONNECTOR	EA	1
19	21	PAHZZ	5935-00-067-8296	MS3116F22-21S	96906	CONNECTOR	EA	1
19	22	PAHZZ	5935-00-835-0508	UG88GU	80058	GROUP 0208 CABLE ASSEMBLY,RADIO FREQUENCY CG-3679/AYM-8 2W7,2W11,2W12	EA	2

SECTION II

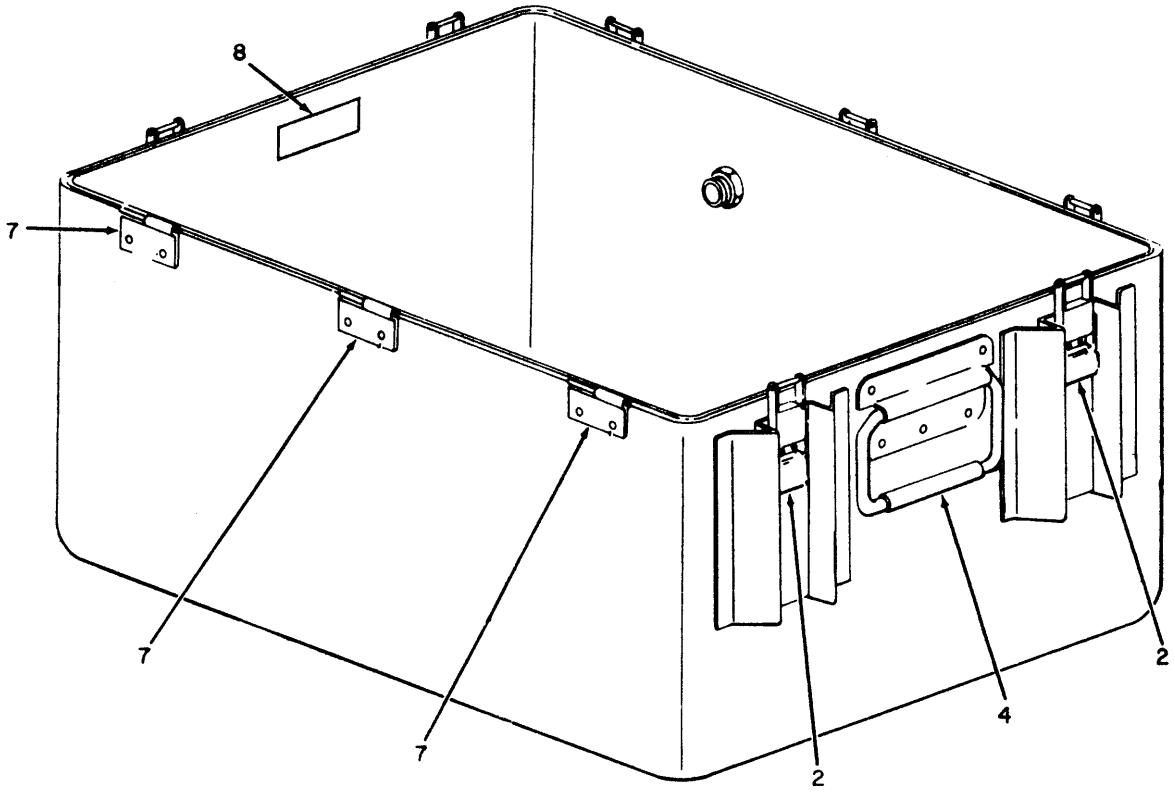
ILLUSTRATION		SMR CODE	NATIONAL STOCK NUMBER	PART NUMBER	FSCM	DESCRIPTION USABLE ON CODE	U/M	QTY INC IN UNIT
(a) FIG NO.	(b) ITEM NO.							
19	23	PAHZZ	5935-00-817-9096	PT06A14-5S	06840	GROUP 0209 CABLE ASSEMBLY, POWER ELECTRICAL BRANCHED CX-12724/AYM-8 2W8	EA	1
19	24	PAHZZ	5935-00-138-0990	5677	74545	CONNECTOR CONNECTOR	EA EA	1 1
19	25	XDHZZ		STK06-18-85PW	11139	GROUP 0210 CABLE ASSEMBLY, SPECIAL PURPOSE, ELECTRICAL CX-12721/AYM-8 2W9	EA	1
19	26	XDHZZ		STK06-18-85SW	11139	CONNECTOR CONNECTOR	EA EA	1 1
19	27	PAHZZ	5935-00-451-7607	PT06A22-41P	77820	GROUP 0211 CABLE ASSEMBLY, SPECIAL PURPOSE. ELECTRICAL CX-12722/AYM-8 2W10	EA	1
19	28	PAHZZ	5935-00-451-7606	PT06A22-41S	77820	CONNECTOR CONNECTOR	EA EA	1 1



CASE BASE ASSEMBLY

EL4LU023

Figure 20. Case Base Assembly (Sheet 1 of 2).



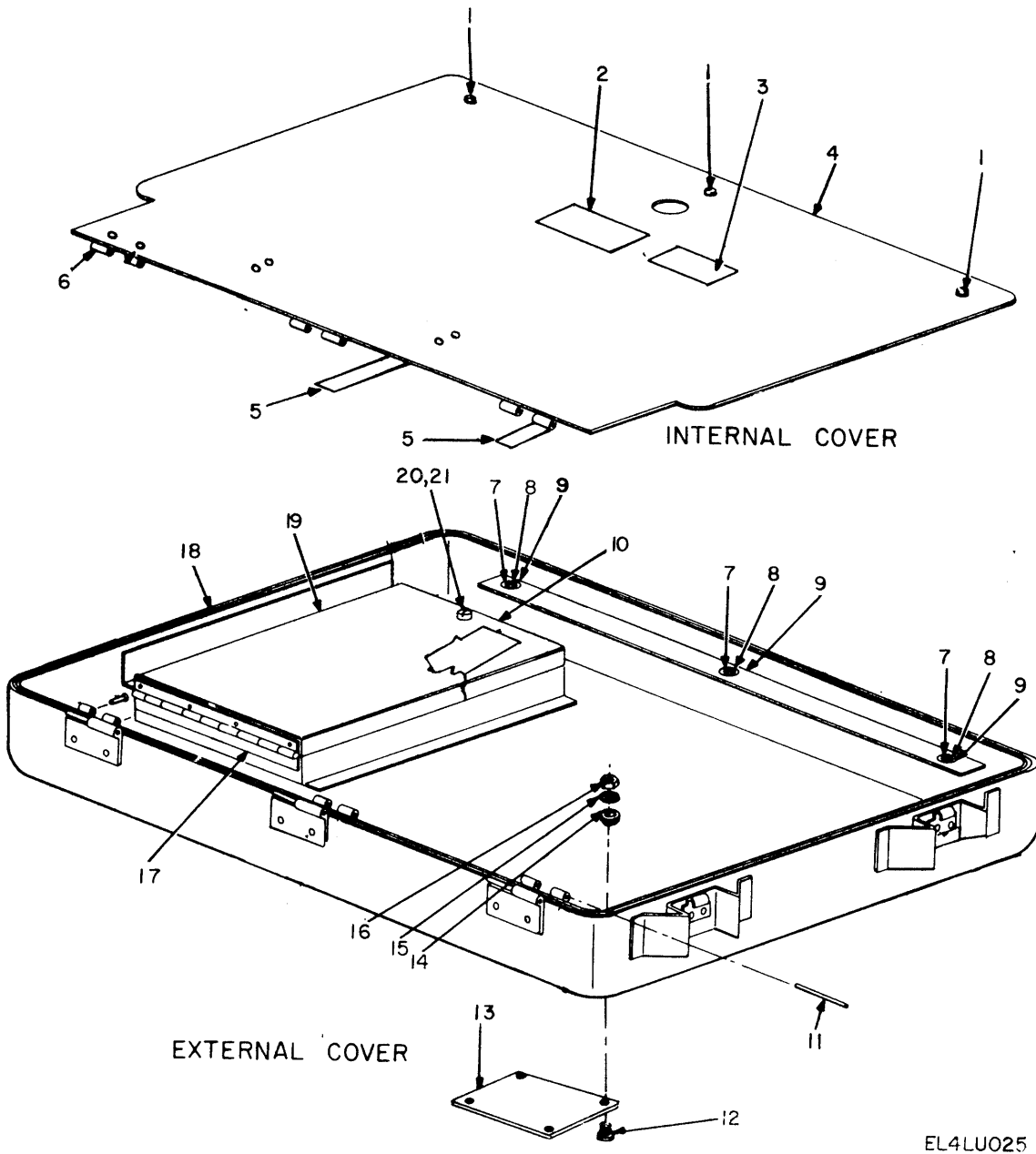
ROTATED 180°

EL4LU024

Figure 20. Case Base Assembly (Sheet 2 of 2).

SECTION II

ILLUSTRATION		SMR CODE	NATIONAL STOCK NUMBER	PART NUMBER	FSCM	DESCRIPTION USABLE ON CODE	U/M	QTY INC IN UNIT
(a) FIG NO.	(b) ITEM NO.							
						GROUP 0212 CASE ASSEMBLY		
20	1	XDHZZ		MS20470AD4	'96906	RIVET,SOLID	EA	34
20	2	PAHZZ	5340-00-158-0226	HC83314-802	26512	LATCH BODY AND-LATCH STRIKE	EA	7
20	3	XDHZZ		MS2047OAD6	96906	RIVET,SOLID	EA	10
20	4	XDHZZ		HA945LS2RG	26512	HANDLE ASSY	EA	1
20	5	PAHZZ	4820-00-898-3003	ZSP6-037-4	98376	VALVE,PRESURE-RELIEF TWO WAY	EA	1
20	6	XDHZZ		ZSP11-1108	19178	LABEL	EA	1
20	7	XDHZZ		ZSP4-400101	26512	HINGE HALF,MALE	EA	3
20	8	XDHZZ		134SEAV14077-11	26512	NAMEPLATE	EA	1



EL4LU025

Figure 21. Case Cover Assembly.

SECTION II

ILLUSTRATION		SMR CODE	NATIONAL STOCK NUMBER	PART NUMBER	FSCM	DESCRIPTION USABLE ON CODE	U/M	QTY INC IN UNIT
(a) FIG NO.	(b) ITEM NO.							
						GROUP 0213 CASE COVER ASSEMBLY		
21	1	PAHZZ	5325-00-791-9871	15S1-1-1AF	71286	STUD	EA	3
21	2	XDHZZ		134SEAV14077-23	26512	NAMEPLATE	EA	1
21	3	XDHZZ		134SEAV14077-13	26512	NAMEPLATE	EA	1
21	4	XDHZZ		ZSP9-9006-90	19178	LID	EA	1
21	5	XDHZZ		ZSP9-902	19178	CARD CLIP	EA	2
21	6	XDHZZ		ZSP4-403	19178	HINGE	EA	3
21	7	PAHZZ	5325-00-065-5952	15R1-1AE	71286	RECEPTACLE	EA	1
21	8	PAHZZ	5310-00-942-5139	15S11-2AE	07652	RETAINER	EA	1
21	9	PAHZZ	5310-00-791-8947	15R10-IAD	26512	NUT	EA	1
21	10	PAHZZ	5325-00-282-7471	85-35-295-15	71286	RECEPTACLE	EA	1
21	11	XDHZZ		ZSP4-4001C2-3	26512	PIN	EA	3
21	12	PAHZZ	5305-00-054-5649	MS51957-15	96906	SCREW,MACHINE	EA	4
21	13	XDHZZ		134SEAV14070-11	26512	NAMEPLATE	EA	1
21	14	PAHZZ	5330-00-966-8883	NAS1598CD4Y	80205	WASHER,SEALING	EA	4
21	15	PAHZZ	5310-00-595-6211	MS15795-803	96906	WASHER,FLAT	EA	4
21	16	PAHZZ	5310-00-807-1415	MS21042104	96906	NUT,SELFLOCKING	EA	4
21	17	XDHZZ		D872586	26512	HINGE	EA	1
21	18	PAHZZ	5330-00-487-4111	ZSP5-504-78	98376	SEAL	EA	1
21	19	XDHHH		D8725D3	19178	COMPARTMENT ASY	EA	1
21	20	PAHZZ	5325-00-530-9610	85-11-660-16	94222	FASTENER,TURN	EA	1
21	21	PAHZZ	5310-00-822-8525	85-34-101-20	94222	RETAINER	EA	1

SECTION IV NATIONAL STOCK NUMBER AND PART NUMBER INDEX
NOTE: LATEST NATIONAL STOCK NUMBER AND PART NUMBER ASSIGNMENTS ARE INCLUDED AT END OF INDEX

STOCK NUMBER	FIGURE NO.	ITEM NO.	STOCK NUMBER	FIGURE NO.	ITEM NO.
5310-00-011-1041	10	18	5995-00-451-0440	17	4
5310-00-011-0411	11	4	5995-00-451-1180	17	5
5910-00-018-1418	16	9	5595-00-451-4953	17	9
5925-00-021-6513	5	100	5915-00-451-5822	5	61
5310-00-045-4007	5	95	5935-00-451-7590	19	6
5940-00-052-9068	10	24	5935-00-451-7591	19	4
5940-00-052-9068	11	8	5935-00-451-7599	9	7
5305-00-054-5638	5	20	5935-00-451-7606	19	28
5305-00-054-5640	5	86	5935-00-451-7607	19	27
5305-00-054-5648	12	33	5910-00-451-7609	10	22
5305-00-054-5649	2	1	5910-00-451-7615	12	49
5305-00-054-5649	5	31	5930-00-451-7619	7	11
5305-00-054-5649	21	12	5935-00-451-7620	19	11
5305-00-054-6650	7	7	5950-00-452-0871	12	31
5305-00-054-6650	12	3	5950-00-452-0902	7	6
5305-00-054-6651	10	11	5930-00-452-0920	7	14
5305-00-054-6651	11	5	5910-00-452-0921	5	67
5305-00-054-6654	8	5	5905-00-455-0819	7	16
5305-00-054-6655	5	9	5905-00-455-0824	10	2
5305-00-054-6670	7	5	5905-00-455-0825	10	3
5305-00-054-6670	8	11	5935-00-465-4193	5	15
5940-00-056-8696	5	42	5365-00-470-8016	5	37
5305-00-059-3659	5	118	5962-00-473-0369	16	14
5961-00-061-8239	12	41	5910-00-484-2928	5	64
5961-00-064-2379	10	23	5961-00-494-4913	5	54
5935-00-067-8296	19	8	5305-00-494-7334	5	14
5935-00-067-8296	19	21	5305-00-494-7334	7	21
5910-00-068-3884	16	20	6625-00-495-0657	1	1
5935-00-097-7569	19	10	5910-00-497-9171	15	17
5962-00-102-7500	15	4	5925-00-498-3390	5	98
5962-00-102-7501	15	7	5310-00-531-9514	9	9
5905-00-104-8349	10	6	5310-00-531-9514	12	2
5925-00-111-1737	5	76	5905-00-542-7810	12	13
5905-00-111-8372	11	1	5310-00-543-2410	15	13
5940-00-113-8184	12	35	5310-00-543-2410	16	12
5905-00-114-5456	10	4	5310-00-543-2410	18	2
5905-00-132-4367	10	7	5310-00-543-2739	5	58
5910-00-136-3732	15	6	5355-00-556-0145	5	3
5935-00-138-0990	19	24	5905-00-563-1598	11	7
5310-00-140-4870	12	8	5910-00-578-1623	10	13
5940-00-143-4771	5	68	5310-00-595-6211	2	4
5310-00-151-9046	3	1	5310-00-595-6211	21	15
5970-00-151-9086	12	28	5310-00-595-6761	10	8
5305-00-151-9933	2	8	5930-00-655-1513	5	80
6243-00-155-7836	5	84	5930-00-655-1515	5	75
6240-00-155-7857	5	78	5930-00-655-1582	5	110
5340-00-158-0226	20	2	5310-00-660-2971	5	59
5340-00-159-3843	12	39	5310-00-685-2631	5	48
5340-00-159-3844	10	20	5935-00-716-9009	7	26
5340-00-159-3845	12	50	5935-00-716-9009	7	28
5960-00-163-1002	9	3	5310-00-722-5998	7	20
6625-00-163-5004	5	16	5310-00-722-5998	10	17
6625-00-163-5005	5	18	5310-00-722-5998	11	3
6660-00-176-0077	13	3	6240-00-723-3378	5	81
6625-00-186-6142	17	8	5935-00-724-7159	5	34
6625-00-186-6151	17	13	5935-00-725-4496	5	105
5905-00-190-8868	5	66	5305-00-727-8834	6	6
6625-00-191-2104	17	12	5905-00-728-6132	16	4
5905-00-192-3959	12	43	5935-00-728-9513	5	101
5935-00-201-7183	19	2	6240-00-752-2581	5	89
5935-00-221-7465	5	104	5905-00-754-7891	15	3
6625-00-233-9198	17	3	5935-00-762-0312	5	73
6625-00-242-3784	2	6	5935-00-762-1497	19	17
6625-00-242-3785	1	2	5355-00-775-4287	5	1
6210-00-242-6418	5	90	5935-00-778-4919	5	27
5905-00-246-9399	16	23	5935-00-783-9133	5	36
5905-00-247-8684	5	65	5935-00-784-5912	5	103
5930-00-254-2302	7	9	5935-00-786-7048	5	119
5325-00-276-6228	12	42	5310-00-791-8947	21	9
5940-00-283-5280	5	115	5310-00-807-1471	2	5
5961-00-400-4729	12	17	5310-00-807-1471	5	49
5305-00-403-7695	5	5	5310-00-807-1471	9	6
5910-00-403-8830	16	3	5310-00-807-1471	18	7
5962-00-405-8456	15	8	5310-00-807-1472	3	6
5930-00-410-5415	7	12	5310-00-807-1472	5	96
5935-00-410-9250	12	45	5310-00-807-1473	8	7
6625-00-432-2384	17	7	5310-00-807-1475	21	16
5930-00-434-8866	7	13	5940-00-813-0698	5	106
5995-00-449-9333	17	10	5961-00-813-9360	16	21
5995-00-449-9344	17	11	5340-00-833-8510	12	18

SECTION IV NATIONAL STOCK NUMBER AND PART NUMBER INDEX

STOCK NUMBER	FIGURE NO.	ITEM NO.	STOCK NUMBER	FIGURE NO.	ITEM NO.
5935-00-835-0508	19	22	5330-00-916-6472	5	47
5310-00-842-8996	12	25	5930-00-919-8013	7	10
5910-00-845-6974	10	25	5935-00-929-2600	5	117
5355-00-850-9799	5	32	5310-00-933-8119	7	1
5330-00-853-3975	5	113	5310-00-933-8119	7	4
5935-00-853-7596	5	109	5310-00-933-8119	12	30
5940-00-857-3414	7	25	5310-00-933-8120	12	27
5910-00-868-6219	16	17	5310-00-933-8121	5	44
5310-00-878-3292	12	51	5310-00-933-8121	12	15
5935-00-880-2670	19	13	5310-00-934-9757	12	29
5935-00-880-2670	19	16	5910-00-936-1522	15	9
5310-00-880-7010	5	19	5320-00-948-7332	10	27
5310-00-880-7010	10	9	5340-00-948-9782	12	21
5935-00-880-8896	5	99	5340-00-948-9908	3	9
5305-00-889-2997	9	4	5935-00-951-9333	5	107
5305-00-889-2997	15	12	5305-00-954-3938	10	10
5305-00-889-2997	16	11	5340-00-956-5367	5	30
5305-00-889-2997	18	4	5330-00-956-8883	2	3
5935-00-892-9329	19	7	5330-00-966-8883	21	14
5935-00-892-9329	19	18	5310-00-974-6623	12	9
5935-00-892-9332	19	3	5961-00-978-5966	12	22
5961-00-893-9563	12	7	5305-00-984-4982	9	13
5935-00-898-0494	12	46	5305-00-984-4988	9	8
4820-00-898-3003	3	10	5935-00-988-4317	5	116
5940-00-901-1179	10	21	5950-00-989-4424	12	52
5940-00-901-2040	18	9	5935-00-990-5565	5	25
5935-00-904-3090	19	12	5935-00-990-5580	5	71
5935-00-904-3090	19	19	5305-00-993-0190	18	8
5905-00-913-4338	12	11	5910-00-997-4078	14	3

PART NUMBER	FSCM	FIG. NO.	ITEM NO.	PART NUMBER	FSCM	FIG. NO.	ITEM NO.
AN960C416	88044	5	45	HA945LS2RG	26512	20	4
A960-8	26512	5	57	HA945LS2RG	98003	3	9
BRC15-000	26512	13	3	HC83314-802	26512	20	2
CA1402-4-12P	29372	2	8	H106	26512	12	52
CA3403	29372	3	1	H492-3	26512	5	1
CG3679AYM8	80058	17	6	JANTX1N1202A	81350	5	54
CK64AW332M	81349	10	25	JAN1N1614	81349	12	22
CQ09A1KG223K3	81349	10	22	JAN1N3008B	81349	12	41
CQ09A16104K3	81349	10	19	JAN1N4245	26512	12	36
CV11C450	81349	10	13	JAN1N649	81349	10	23
CW1148AYM8	80058	2	6	JAN2N1016B	81349	12	7
CX12714AYM8	26512	17	4	JAN2N1613	81349	16	21
CX12715AYM8	26512	17	5	LC27CM2MILL3661-27	81349	5	8
CX12716AYM8	26512	17	8				
CX12717AYM8	26512	17	12				
CX12718AYM8	26512	17	10				
CX12719AYM8	26512	17	13				
CX12721AYM8	26512	17	9	LKS632-2	46384	8	9
CX12722AYM8	26512	17	7	MS 1042L06	96906	3	6
CX12724AYM8	26512	17	11	MS15795-802	96906	10	8
CY7114AYM8	26512	1	2	MS15795-803	96906	2	4
				MS15795-803	96906	21	15
DA24658	26512	5	36	MS15795-805	96906	7	20
D144-00	06090	5	38	MS15795-805	96906	10	17
D144-00	06090	7	25	MS15795-805	96906	11	3
D144-01	26512	5	42	MS16535-115	96906	10	27
D144-02	06090	5	40	MS16535-55	96906	15	2
D146-02	26512	7	27	MS16535-55	96906	16	2
D20418-2	26512	12	46	MS17322-2	96906	5	93
D20419-16	26512	5	34	MS17822-1-9	96906	5	35
D8660D1	19178	3	13	MS20341-10A	96906	12	26
D8725-3	26512	17	1	MS20341-416A	96906	12	14
D8725B6	26512	21	17	MS20341-85	96906	12	29
D8725D3	19178	21	19	MS20426AD2	96906	10	14
FTSM1TUR	98291	12	37	MS20426AD3	96906	3	2
GA2T040S254UA	26512	7	16	MS20426AD3	96906	8	3
GS550C04C5	26512	5	5	MS20426AD3	96906	12	24
GS550C06C5	26512	7	17	MS20470AD3	96906	5	29
GT11FAF06-8	26512	5	91	MS20470AD3	96906	12	48
GT11FBF06-10	26512	5	112	MS20470AG4	96906	4	3
GT11H2A	26512	18	9	MS20470AD4	96906	12	40
GT11H3B	26512	14	2	MS20470AD4	96906	20	1
G1285-4	06324	5	41	MS20470AD6	96906	4	6
G1285-4	06324	7	24	MS20470AD6	96906	20	3
G1285-5	26512	5	37	MS21042L02	96906	5	19
G1285-6	26512	5	39	MS21042L02	96906	10	9

SECTION IV

PART NUMBER	FSCM	FIG. NO.	ITEM NO.	PART NUMBER	FSCM	FIG. NO.	ITEM NO.
MS21042L04	96916	2	5	MS35338-79	96906	11	4
MS21042L04	96906	5	49	MS35489-9	96906	12	42
MS21042L04	96906	9	6	MS51957-14	96906	12	33
MS21042L04	96906	18	7	M551957-15	96906	2	1
MS21042L06	96906	5	96	MS51957-15	96906	5	31
MS21042L08	96906	8	7	MS51957-15	96906	21	12
MS21042104	96906	21	16	MS51957-26	96906	7	7
MS21043-04	96906	12	51	MS51957-26	96906	12	3
MS24515-685	96906	5	89	MS51957-21	96906	5	72
MS25036-101	96906	5	106	MS51957-27	96906	10	11
MS25036-103	96906	5	68	MS51957-27	96906	11	5
MS25036-106	96906	5	115	MS51957-28	96906	5	14
MS25036-150	96906	12	35	MS51957-2b	96906	7	21
MS25082-S5	96906	12	8	MS51957-30	96906	8	5
MS25082-2	96906	5	59	MS51957-31	96906	5	9
MS25082-4	96906	5	48	MS51957-32	96906	7	2
MS25237-327	96906	5	84	MS51957-4	96906	5	20
MS25237-328	96906	5	7b	MS51957-45	96906	1	5
MS25252C9A	96906	5	81	MS51957-45	96906	8	11
MS28775-223	96906	13	2	MS51957-6	96906	5	86
MS3106A14S5P	96906	19	2	MS51958-63	96906	5	118
MS3114E22-21P	96906	5	107	MS51959-48	96906	6	6
MS3114E22-21PW	96906	5	108	MS90376-48R	96906	5	2
MS3114H20C41P	96906	7	23	MS91528-0N1B	96906	5	32
MS3114H22C21P	96906	7	28	MS91528-1K2B	96906	5	3
MS3114H22C21PW	96906	7	26	MX966AYM	26512	17	3
MS3116F20-16P	96906	19	13	M2408-1-2MILL-24308-1	81349	5	33
MS3116F20-16P	96906	19	16	M24308-2-3	81349	12	45
MS3116F20-16PW	96906	19	10	M3786-4-0002	81349	7	12
MS3116F20-16PX	96906	19	9	M3786-4-0004	81349	7	9
MS3116F20-16PY	96906	19	11	M3786-4-0006	81349	7	13
MS3116F20-41P	96906	19	17	M3786-4-0093	81349	7	14
MS3116F22-21S	96906	19	8	M39003-01-2028	81349	14	3
MS3116F22-21S	96906	19	21	M39003-01-2046	81349	15	9
MS3116F22-21SW	96906	19	12	M39003-01-2268	81349	16	17
MS3116F22-21SW	96906	19	19	M39003-01-2278	26512	12	19
MS3116F22-41P	96906	19	5	M39003-01-2304	81349	16	9
MS3116F2Z-41P	96906	19	14	M39003-01-2374	81349	16	20
MS3116F22-41P	96906	19	20	M39003-02-0008	81349	16	3
MS3116F22-55P	96906	19	7	M39006-09-1188	81349	12	20
MS3116F22-55P	96906	19	18	M39012-25-0006	81349	5	30
MS3116F22-55S	96906	19	3	M39014-01-0237	26512	15	11
MS3124E14-5P	96906	5	99	M39014-01-0237	81349	16	16
MS3124E20-16S	96906	5	101	M39014-02-0206	81349	15	6
MS3124E22-41S	96906	5	104	M39014-02-0218	81349	12	23
MS3124E22-55P	96906	5	103	M39014-02-0218	81349	14	4
MS3124E22-55S	96906	5	105	M39014-02-0218	81349	15	15
MS3126E20-41S	96906	5	116	M39014-02-0218	81349	16	18
MS3126E22-21S	96906	5	119	M39014-02-0227	81349	16	6
MS3126E22-21SW	96906	5	117	M39014-02-0227	81349	15	17
MS3181-14N	96906	5	71	M39014-02-0246	81349	5	64
MS3181-20N	96906	5	25	M39018-03-0279	81349	12	38
MS3181-22N	96906	5	27	M39018-03-0281	81349	12	49
MS35058-21	96906	5	80	M39019-1-85	81349	5	76
MS35058-23	96906	5	75	M39019-1-9	81349	5	102
MS35059-23	96906	5	110	M39019-3-39	81349	5	98
MS35206-207	96916	10	10	M39019-3-59	81349	5	100
MS35206-208	96906	10	15	M39024-10-03	26512	5	73
MS35206-214	96906	18	8				
MS35206-215	96906	9	4	NAS1189C3PN7	26512	5	23
MS35206-215	96906	15	12	NAS1454C08-0100	26512	5	60
MS35206-215	96906	16	11	NAS1464-036-06C	80205	12	18
MS35206-215	96906	18	4	NAS1464-040-06C	80205	12	21
MS35206-225	96906	9	13	NAS1464-065-20C	80205	12	39
MS35206-228	96906	9	8	NAS1464-074-12C	80205	010	20
MS35333-72	96906	5	58	NAS1464-101-16C	80205	12	50
MS35338-136	96906	9	9	NAS1515HL3	80205	5	69
MS35338-136	96906	12	2	NAS1598C04Y	80205	21	14
MS35338-137	96906	7	1	NAS1598C04Y	80205	2	3
MS35338-137	96906	7	4	NAS1598C06Y	80205	5	113
MS35338-137	96906	12	30	NAS1598C4Y	80205	5	47
MS35338-138	96906	12	27	NAS620A4L	80205	15	14
MS35338-139	96906	5	44	NAS620A4L	80205	16	13
MS35338-139	96906	12	15	NAS620A4L	80205	18	3
MS35338-140	96906	12	9	NAS686C3	26512	8	2
MS35338-40	96906	15	13	NAS696A06L	80205	12	25
MS35338-40	96906	16	12	PC39G121MILL1440 9	81349	5	67
MS35338-40	96906	18	2	PE1009	03877	5	15
MS35338-41	96906	5	95	PE1009	03877	18	6
MS35338-79	96906	10	18	PE1011	03877	15	10

SECTION IV

PART NUMBER	FSCM	FIG. NO.	ITEM NO.	PART NUMBER	FSCM	FIG. NO.	ITEM NO.
PE1011	26512	16	15	100-1873-1	26512	7	6
PE1011	26512	18	1	100-1874-1	12868	7	3
PT06A14-5S	06840	19	1	102SIA	26512	5	90
PT06A14-5S	06840	19	23	10549B1032-4A	26512	5	10
PT06A22-41P	77820	19	27	134SEAV14060-11	26512	2	2
PT06A22-41S	77820	19	28	1345EAV14061-1	26512	2	7
RA20LASB202A	81349	12	13	134SEAV14061-13	26512	5	28
RCR07G123JM	81349	15	3	134SEAV14062-1	26512	5	120
RCR07G153JM	81349	16	4	1345EAV14064-1	26512	5	16
RCR07G272JM	26512	14	1	134SEAV14066-1	26512	5	18
RCR20GF514JM	81349	10	5	134SEAV14067-1	26512	2	9
RCR20GF684JM	81349	10	4	134SEAV14067-11	26512	3	3
RCR20G511JR	81349	10	6	134SEAV14067-13	26512	4	4
RCR20G514JM	26512	5	62	134SEAV14067-15	26512	4	5
RCR32G101JM	81349	16	19	134SEAV14068-15	26512	8	6
RCR32G103JR	81349	10	12	134SEAV14068-17	26512	8	8
RCR32G105JR	81349	5	65	134SEAV14068-19	26512	8	4
RCR32G202JM	81349	16	23	134SEAV14068-21	26512	8	1
RCR32G222JM	81349	11	1	134SEAV14068-23	26512	8	12
RCR32G471JM	81349	12	12	134SEAV14068-25	26512	8	10
RC42GF201J	81349	12	43	134SEAV14068-5	26512	7	15
RC42GF622J	81349	5	66	134SEAV14069-15	26512	12	47
RF1100-3	26512	5	61	134SEAV1406917	26512	12	5
RF725	26512	5	51	134SEAV14069-19	26512	12	32
RF733	13619	5	52	134SEAV14069-31	26512	12	34
RJ22CL504	81349	10	7	134SEAV14069-5	26512	12	1
RLR20C394GR	81349	10	2	134SEAV14069-9	26512	5	26
RLR32C824GM	81349	10	3	134SEAV14070-11	26512	21	13
RWR74S1001FM	81349	12	44	134SEAV14071-1	26512	7	22
RWR74S3010FM	81349	11	7	134SEAV14071-11	26512	9	5
RW79UR499F	81349	12	11	134SEAV14071-13	26512	9	2
R102-500	18677	6	2	134SEAV14071-17	26512	9	7
R306-51	18677	6	3	134SEAV14071-3	26512	9	10
R901-2-125	18677	6	4	134SEAV14071-5	26512	9	1
SE12XC05	81349	10	24	134SEAV14072-1	26512	5	4
SE12XC05	81349	11	8	134SEAV14073-13	26512	10	1
SE14XC02	81349	10	21	134SEAV14073-15	26512	10	16
SR83314	98003	4	7	134SEAV14073-3	26512	7	19
STK06-10-19S059	11139	19	15	134SEAV14074-1	26512	7	8
STK06-18-85PW	11139	19	25	134SEAV14074-11	26512	11	6
STK06-18-85PW059	11139	19	4	134SEAV14075-1	26512	5	114
STK06-18-85SW	11139	19	26	134SEAV14077-1	26512	17	2
STK06-18-85S059	11139	19	6	134SEAV14077-11	26512	20	8
S207	26512	15	5	134SEAV14077-13	26512	21	3
S207	26512	16	5	134SEAV14077-23	26512	21	2
TS3089AYM8	26512	1	1	134SEAV14078-1	26512	5	11
TW63140	26512	12	31	134SEAV14078-5	26512	5	24
UG1094BU	80058	5	109	134SEAV14083-11	26512	5	53
UG88GU	80058	19	22	134SEAV14083-13	26512	5	6
U6A901651X	26512	15	8	134SEAV14116-13	26512	18	10
U6A993251X	26512	5	22	134SEAV14117-11	26512	4	9
U6A993251X	26512	15	7	1345EAV14117-13	26512	4	10
U6A993251X	87216	16	8	134SEAV14124-11	26512	5	91
U6A993651X	07263	15	16	134SEME10026-11	26512	3	5
U6A993651X	07263	16	10	134SEME14003-1	26512	13	5
U6A994551X	26512	16	14	134SEME14004-1	26512	9	12
U6A994651X	07263	16	1	134SEME14005-1	26512	13	1
U6A995151X	87216	15	4	134SEME14006-1	26512	5	46
U6A995151X	87216	16	7	134SEME14007-1	26512	13	4
W1501	81640	5	92	1468	83330	5	56
W403P6	81640	5	83	15R1-1AE	71286	21	7
ZSP11-1108	19178	3	11	15R10-1AD	26512	21	9
ZSP11-110d	19178	20	6	15S1-1-1AF	71268	21	1
ZSP2-204-2	98376	4	1	15S11-2AE	07652	21	8
ZSP2-204-3	98376	3	7	1828-2-1	26512	12	6
ZSP4-4001C1	19178	4	2	1905MU2-5	26512	7	11
ZSP4-4001C1	26512	3	4	21B1003N	26512	5	70
ZSP4-4001C1	26512	20	7	24430	26512	5	12
ZSP4-4001C2-3	26512	21	11	24430-1	18677	6	5
ZSP4-403	19178	21	6	24430-2	18677	6	1
ZSP5-504-78	98376	3	12	293075	26512	12	16
1SP5-504-7b	98376	21	18	293236	26512	12	10
ZSP6-037-4	19178	3	10	293422	76530	5	55
ZSP6-037-4	98376	20	5	293422	76530	12	28
ZSP9-9006-90	19178	21	4	3-1900-3B16C	26512	7	10
ZSP9-902	19178	4	8	314AG3A	26512	5	21
ZSP9-902	19178	21	5	3400S1-502	80294	5	77
03-0101-6849	12881	7	18	350-3935-05-07-00	26512	10	26
1E21P27	26512	9	11	350-3935-05-07-00	26512	11	2
1N45548	26512	12	17	3500S90-502	80294	5	74

SECTION IV

PART NUMBER	FSCM	FIG. NO.	ITEM NO.	PART NUMBER	FSCM	FIG. NO.	ITEM NO.
3650-2	71279	5	50	80801F	26512	9	3
5677	74545	19	24	8162SS06332-7	26512	12	4
672-13GD	26512	15	1	85-11-660-16	94222	21	20
672-13GD	26512	16	24	85-34-101-20	94222	21	21
7G130	07126	5	85	85-35-295-15	71286	21	10
7G131	07126	5	88	96S22F03	03877	5	94
7G132	26512	5	87	96S22F03	03877	18	5
				96S2207	26512	5	17
7717-4DAP	13103	16	22	9753SS0632-7	26512	5	111

LATEST NATIONAL STOCK NUMBER ASSIGNMENTS

STOCK NUMBER	FIGURE NO.	ITEM NO.	STOCK NUMBER	FIGURE NO.	ITEM NO.
5910-00-010-4913	12	20	5930-00-451-7587	5	88
5910-00-022-5655	15	11	5930-00-451-7588	5	87
5910-00-022-5655	16	16			
5905-00-038-5916	12	44	5950-00-451-7597	7	3
5305-00-054-6651	5	72	5935-00-465-4193	18	6
5305-00-054-6656	7	2	5330-00-487-4111	3	12
5325-00-065-5952	21	7	5330-00-487-4111	21	18
5962-00-102-7500	16	7	5910-00-497-9171	16	6
5962-00-102-7501	16	8	5325-00-530-9610	21	20
5905-00-106-9346	10	12	5310-00-531-9515	5	45
5910-00-116-8653	12	23	5940-00-578-3484	12	37
5910-00-116-8653	14	4	5310-00-660-3372	15	14
5910-00-116-8653	15	15	5310-00-660-3372	16	13
5910-00-116-8653	16	18	5310-00-660-3372	18	3
5962-00-136-3231	16	1	5325-00-791-9871	21	1
5905-00-150-0481	5	74	5940-00-812-8151	5	50
5970-00-151-9086	5	55	5935-00-817-9096	19	1
5365-00-158-0277	5	41	5935-00-817-9096	19	23
5365-00-158-0277	7	24	5310-00-819-9188	8	9
5325-00-282-7471	21	10	5310-00-822-8525	21	21
5340-00-402-4831	3	7	5940-00-857-3414	5	38
5950-00-405-1219	5	77	5310-00-869-1018	12	14
5930-00-419-3987	5	92	4820-00-898-3003	20	5
5962-00-420-6493	15	16	5940-00-935-8317	5	40
5962-00-420-6493	16	10	5310-00-942-5139	21	8
5999-00-420-7175	5	94	5961-00-946-7708	16	22
5999-00-420-7175	18	5	5915-00-956-6888	5	52
5995-00-451-0445	17	6	5930-00-990-7257	5	83
5930-00-451-7586	5	85			

LATEST PART NUMBER ASSIGNMENT

PART NUMBER	FSCM	FIG. NO.	ITEM NO.
MS20470AD6	96906	3	8

ADDITIONAL LATEST NATIONAL STOCK NUMBER ASSIGNMENTS

ADDITIONAL LATEST PART NUMBER ASSIGNMENTS

STOCK NUMBER	FIGURE NO.	ITEM NO.	PART NUMBER	FSCM	FIGURE NO.	ITEM NO.
6210-00-145-1369	5	7	05947414282B	70318	5	43
5310-00-151-9078	5	43	LC27RN2	81349	5	13
5330-00-171-6649	13	2	LC28RN2	81349	5	7
5910-00-j389-3835	5	63	MIL-L-3661/6	81349	5	82
6210-00-231-0613	5	13	MILL3661-5	81349	5	79
6210-00-438-2234	5	79	M39014-01-0262	81349	5	63
5940-00-578-9896	5	56				
6210-00-809-4274	5	82				
5365-00-931-8711	6	2				

By Order of the Secretary of the Army:

Official:


BERNARD W. ROGERS
General, United States Army
Chief of Staff

J.C. PENNINGTON
Brigadier General, United States Army
The Adjutant General

DISTRIBUTION:

To be distributed in accordance with DA Form 12-36, Section I, Direct General Support Maintenance requirements for AN/AYA-10.

RECOMMENDED CHANGES TO EQUIPMENT TECHNICAL PUBLICATIONS

 <div style="border: 1px solid black; border-radius: 15px; padding: 5px; display: inline-block; margin-left: 10px;"> <p style="margin: 0;"><i>THEN...JOT DOWN THE DOPE ABOUT IT ON THIS FORM. CAREFULLY TEAR IT OUT, FOLD IT AND DROP IT IN THE MAIL.</i></p> </div>		SOMETHING WRONG WITH PUBLICATION	
		FROM: (PRINT YOUR UNIT'S COMPLETE ADDRESS)	
PUBLICATION NUMBER		DATE SENT	
PUBLICATION DATE		PUBLICATION TITLE	
BE EXACT PIN-POINT WHERE IT IS			
PAGE NO.	PARA- GRAPH	FIGURE NO.	TABLE NO.
<div style="border: 1px solid black; height: 400px; margin-top: 10px;"> <p style="text-align: center; font-weight: bold; margin-top: 10px;">IN THIS SPACE, TELL WHAT IS WRONG AND WHAT SHOULD BE DONE ABOUT IT.</p> </div>			
PRINTED NAME, GRADE OR TITLE AND TELEPHONE NUMBER			SIGN HERE

